

6

5

4

3

2

1

Revisions

Rev	Description	Date	Approved:
A	Initial Release	2022.7.2	A. M

ELECTRICAL PERFORMANCE

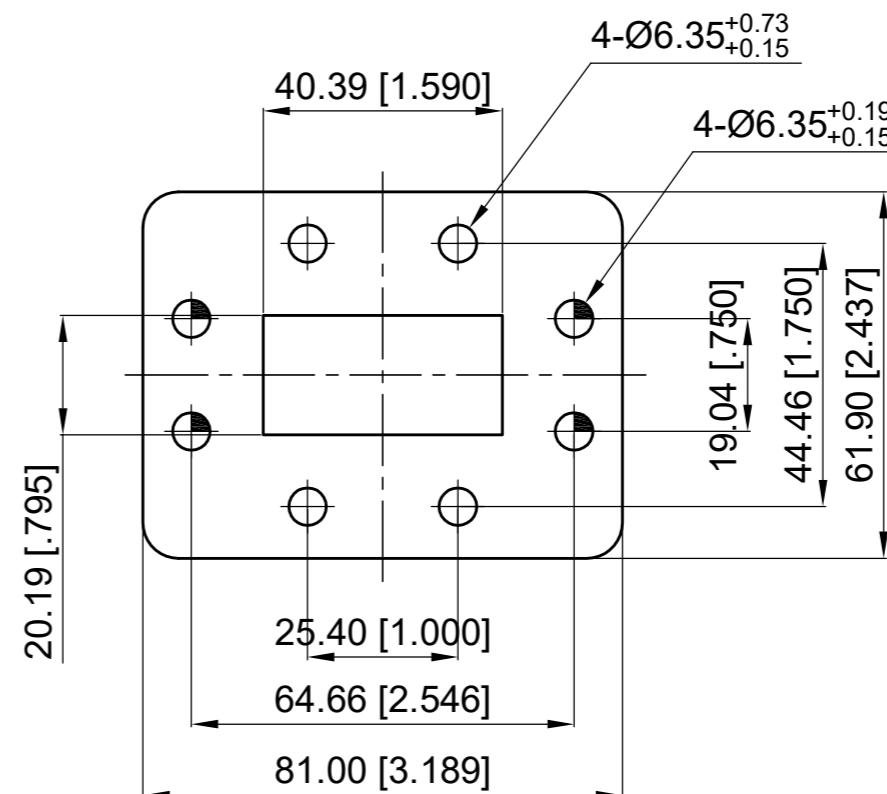
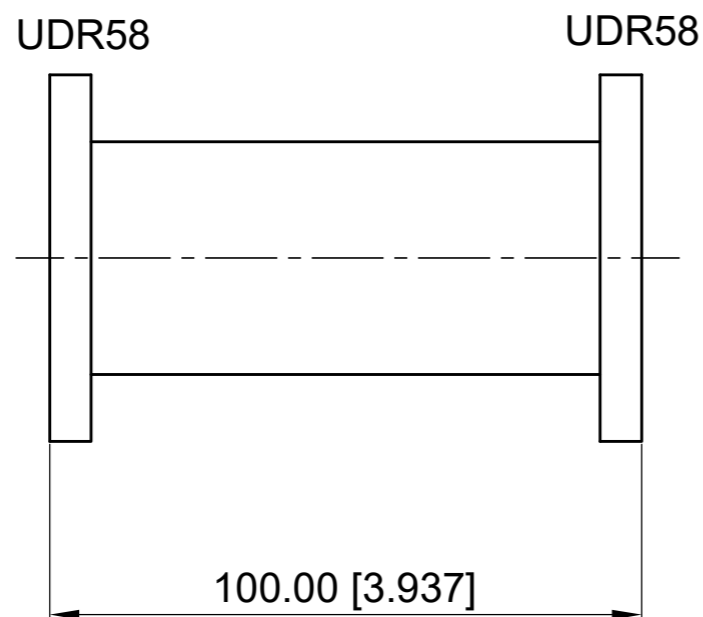
Frequency Range: 4.64-7.05 GHz

VSWR: 1.05 max.

MATERIAL

Body: Aluminum, Oxized

Paint: Gray



NOTES:

- 1. ALL SPECIFICATIONS ARE SUBJECT TO CHANGE WITHOUT NOTICE AT ANY TIME
- 2. CUSTOMER OUTLINE DRAWING FOR REFERENCE ONLY

Drawn:	W. Y 2022.7.2
Checked:	T. L 2022.7.2
Approved:	A. M 2022.7.2
Unless Otherwise Specified Dimensions are in Millimeters, Dimensions in [ ] are in Inches for Customer Reference Only. Unless Otherwise Specified Tolerance are: .XX ±0.13 [.005"] .X ±0.20 [.008"] X ±0.50 [.019"] .X° ±1° X° ±2°	

Title:	Straight Waveguide, WR159(UDR58) at Both Side, Length 100 mm
Part No:	DSW159D1D1-100

**DEEWAVE**

[www.deewave.com](http://www.deewave.com)

View:

Size: A3	Scale: 1.25:1	Sheet: 1/1	Rev: A
----------	---------------	------------	--------

6

5

4

3

2

1