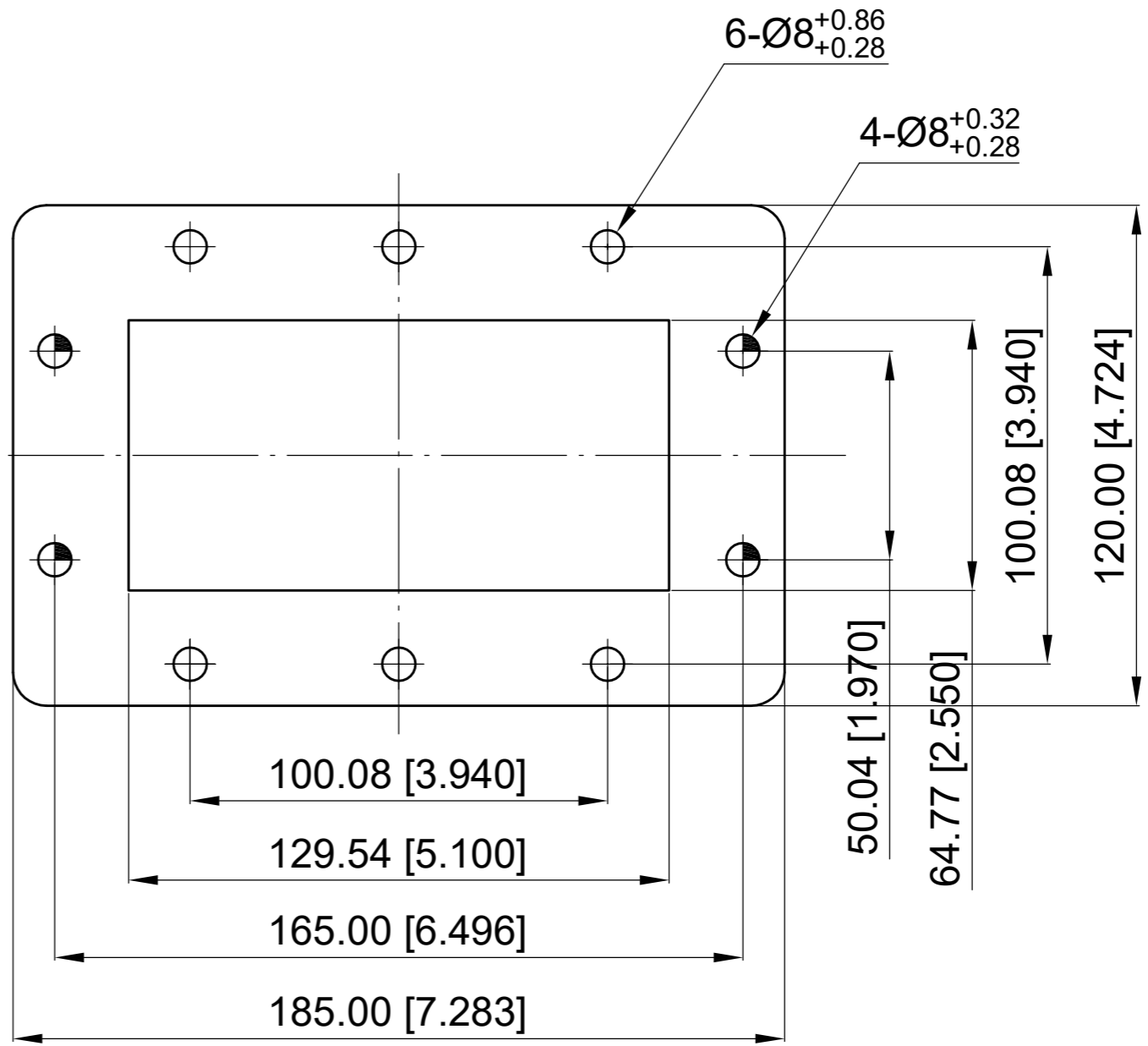
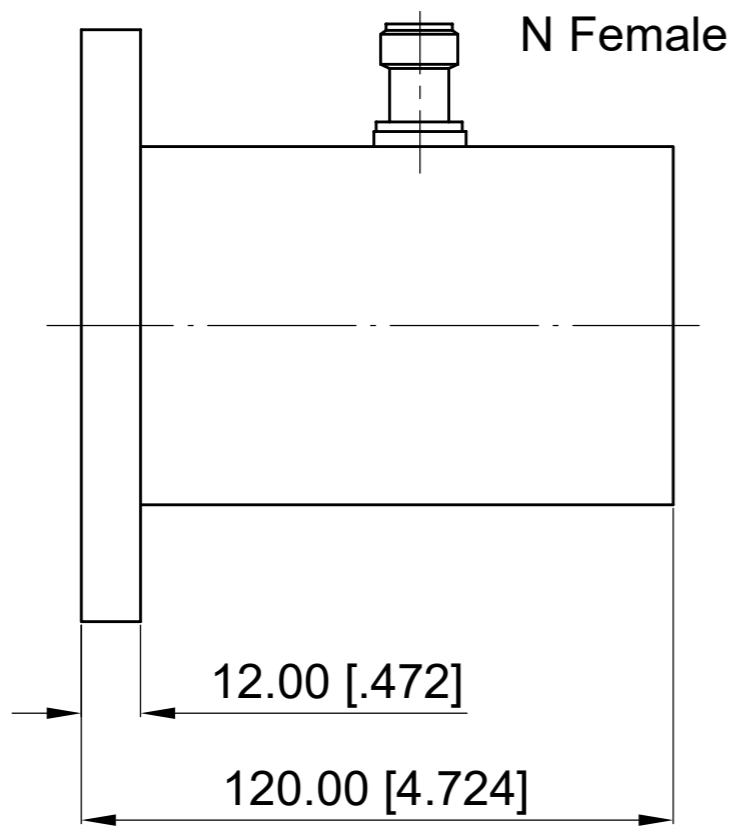


| Revisions |                 |          |           |
|-----------|-----------------|----------|-----------|
| Rev       | Description     | Date     | Approved: |
| A         | Initial Release | 2021.7.7 | A. M      |

**ELECTRICAL PERFORMANCE**  
 Frequency Range: 1.45-2.2 GHz  
 VSWR: 1.25 max.

**MATERIAL**  
 Body: Alumium



NOTES:  
 1. ALL SPECIFICATIONS ARE SUBJECT TO CHANGE WITHOUT NOTICE AT ANY TIME  
 2. CUSTOMER OUTLINE DRAWING FOR REFERENCE ONLY

|  |               |
|--|---------------|
| Drawn:   | W. Y 2021.7.7 |
| Checked:   | T. L 2021.7.7 |
| Approved:  | A. M 2021.7.7 |
| Unless Otherwise Specified Dimensions are in Millimeters,<br>Dimensions in [ ] are in Inches for Customer Reference Only.<br>Unless Otherwise Specified Tolerance are:<br>.XX ±0.13 [.005"] .X ±0.20 [.008"] X ±0.50 [.019"]<br>.X° ±1° X° ±2° |               |

|          |  |
|----------|--|
| Title:   | WR510 (UDR18) RA to N Female<br>Adaptor, Freq 1.45-2.2 GHz |
| Part No: | DWCA510D1NFL   |

**DEEWAVE**  
[www.deewave.com](http://www.deewave.com)

View:

|       |        |        |      |
|-------|--------|--------|------|
| Size: | Scale: | Sheet: | Rev: |
| A3    | 1:1.5  | 1/1    | A    |