

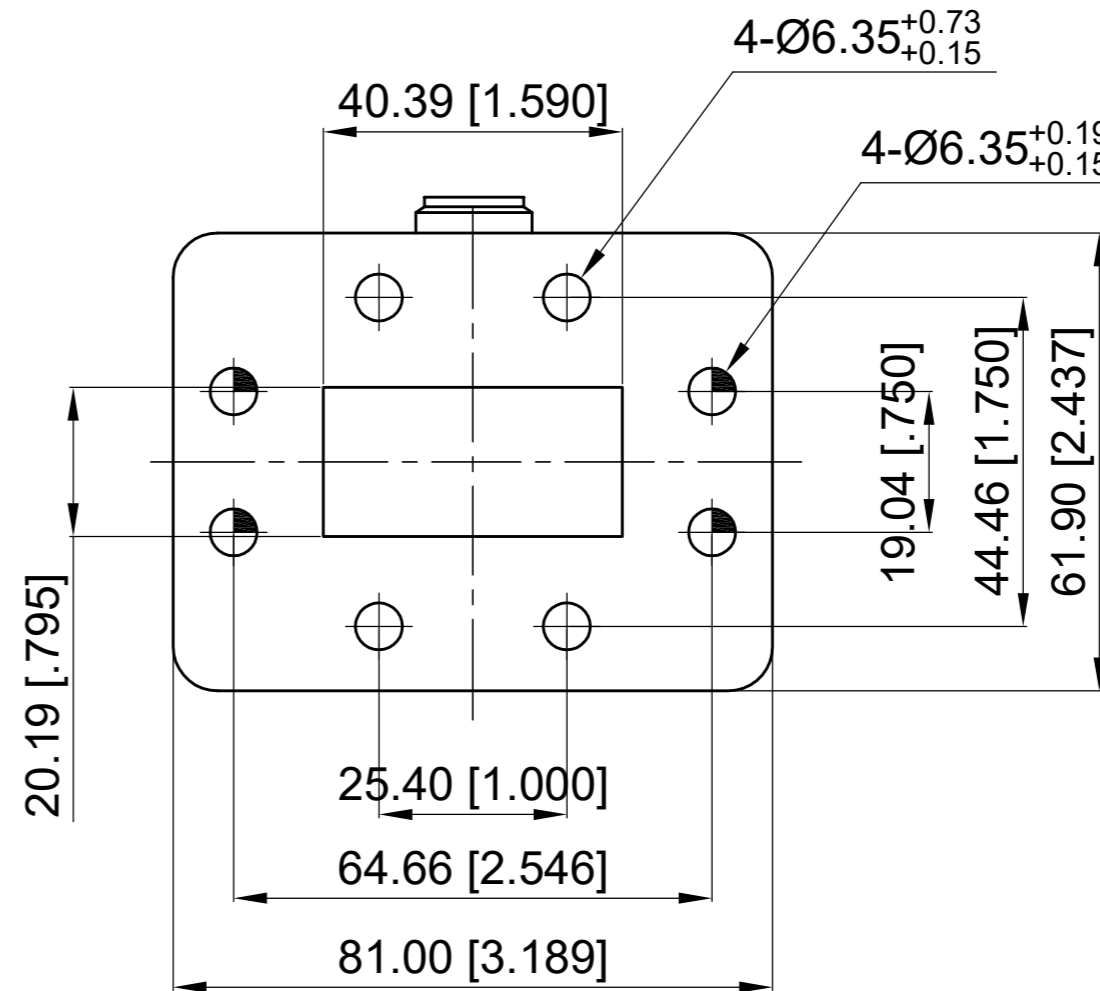
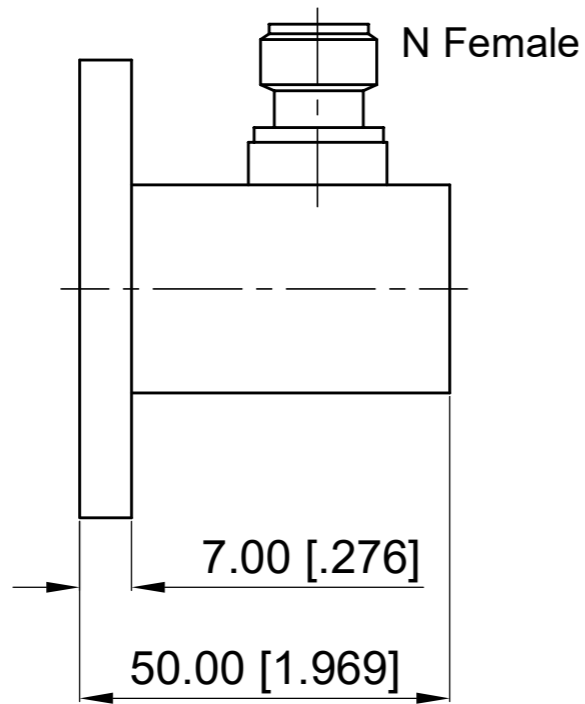
ELECTRICAL PERFORMANCE

- 1. Freq Range: 4.64-7.05 GHz
- 2. VSWR: 1.25 max.

MATERIAL

- 1. Waveguide Body: Aluminum

Revisions			
Rev	Description	Date	Approved:
A	Initial Release	2016.9.6	A. M




NOTES:

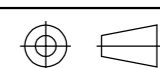
- 1. ALL SPECIFICATIONS ARE SUBJECT TO CHANGE WITHOUT NOTICE AT ANY TIME
- 2. CUSTOMER OUTLINE DRAWING FOR REFERENCE ONLY

Drawn:	W. Y 2016.9.6
Checked:	T. L 2016.9.6
Approved:	A. M 2016.9.6
<small>Unless Otherwise Specified Dimensions are in Millimeters, Dimensions in [] are in Inches for Customer Reference Only. Unless Otherwise Specified Tolerance are: .XX ±0.13 [.005"] .X ±0.20 [.008"] X ±0.50 [.019"] .X° ±1° X° ±2°</small>	

Title:	WR159 (UDR58) Right Angle to N Female Adaptor, Freq 4.64-7.05 GHz
Part No:	DWCA159D1NFL

DEEWAVE 

www.deewave.com

View: 

Size: A3	Scale: 1:1	Sheet: 1/1	Rev: A
----------	------------	------------	--------