

6

5

4

3

2

1

Revisions

Rev	Description	Date	Approved:
A	Initial Release	2023.3.15	A. M

ELECTRICAL PERFORMANCE

Frequency Range: 9.84-12.40GHz

VSWR: 1.10 max.

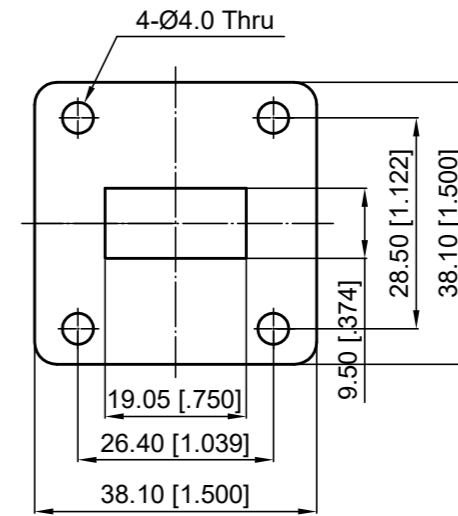
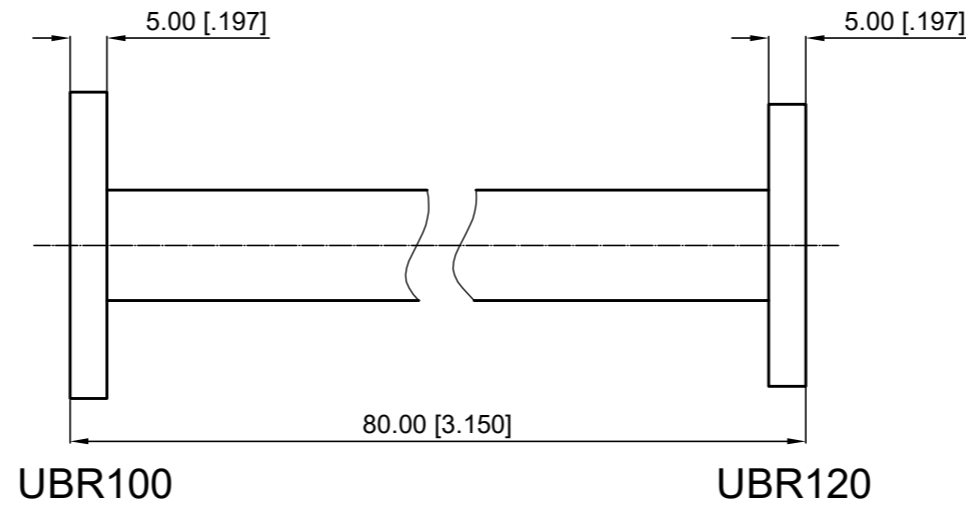
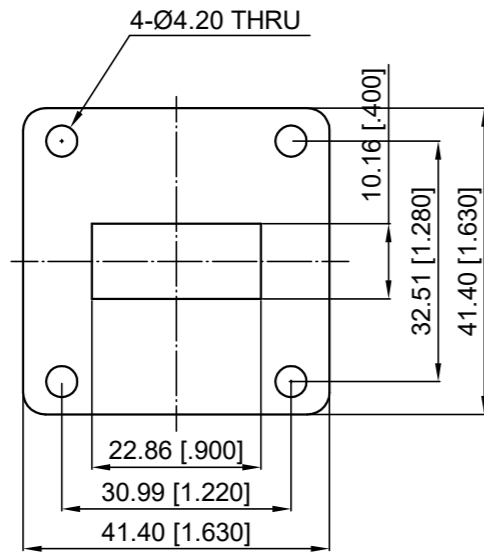
Port 1: WR90 (UBR100)

Port 2: WR75 (UBR120)

MATERIAL

Body: Brass, Plated Ag

Paint: Gray



NOTES:

1. ALL SPECIFICATIONS ARE SUBJECT TO CHANGE WITHOUT NOTICE AT ANY TIME
2. CUSTOMER OUTLINE DRAWING FOR REFERENCE ONLY

Drawn:	W. Y 2023.3.15
Checked:	T. L 2023.3.15
Approved:	A. M 2023.3.15
Unless Otherwise Specified Dimensions are in Millimeters, Dimensions in [] are in Inches for Customer Reference Only. Unless Otherwise Specified Tolerance are: .XX ±0.13 [.005"] .X ±0.20 [.008"] X ±0.50 [.019"] .X° ±1° X° ±2°	

Title:	WR90 to WR75 Waveguide Transition, 80mm Length
Part No:	DWT90-75-80



View:	
Size:	A3
Scale:	1:3
Sheet:	1/1
Rev:	A

6

5

4

3

2

1