

6

5

4

3

2

1

Revisions			
Rev	Description	Date	Approved:
A	Initial Release	2020.9.14	A. M

**ELECTRICAL PERFORMANCE**

Frequency Range: 11.9-15 GHz

VSWR: 1.10 max.

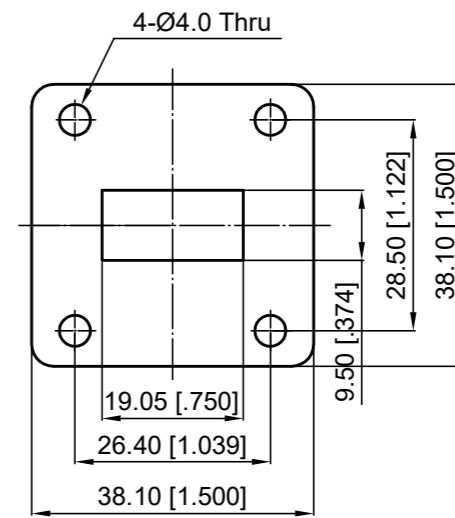
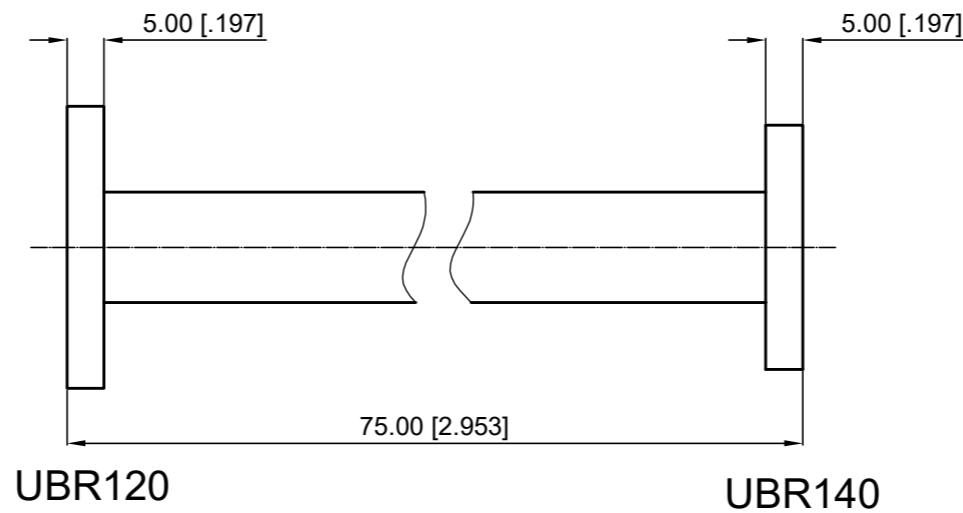
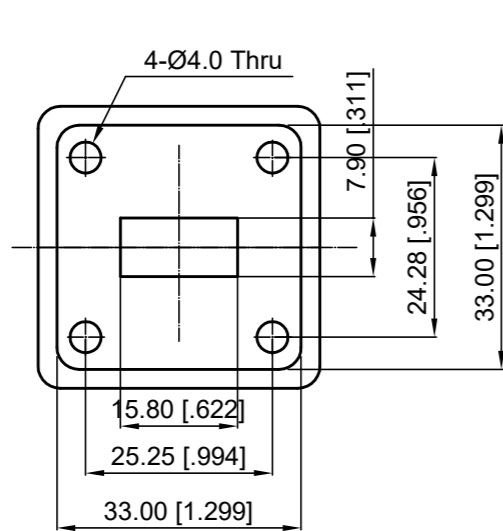
Port 1: WR75 (UBR120)

Port 2: WR62 (UBR140)

**MATERIAL**

Body: Brass, Plated Ag

Paint: Gray



NOTES:

- 1. ALL SPECIFICATIONS ARE SUBJECT TO CHANGE WITHOUT NOTICE AT ANY TIME
- 2. CUSTOMER OUTLINE DRAWING FOR REFERENCE ONLY

Drawn:	W. Y 2020.9.14
Checked:	T. L 2020.9.14
Approved:	A. M 2020.9.14
Unless Otherwise Specified Dimensions are in Millimeters, Dimensions in [ ] are in Inches for Customer Reference Only. Unless Otherwise Specified Tolerance are: .XX ±0.13 [0.005"] .X ±0.20 [0.008"] X ±0.50 [0.019"] .X° ±1° X° ±2°	

Title:	WR75 to WR62 Waveguide Transition, 75mm Length
Part No:	DWT75-62-75



View:	
Size:	A3
Scale:	1:3
Sheet:	1/1
Rev:	A

6

5

4

3

2

1