

Revisions			
Rev	Description	Date	Approved:
A	Initial Release	2023.3.15	A. M

**ELECTRICAL PERFORMANCE**

Frequency Range: 8.20-9.99 GHz

VSWR: 1.10 max.

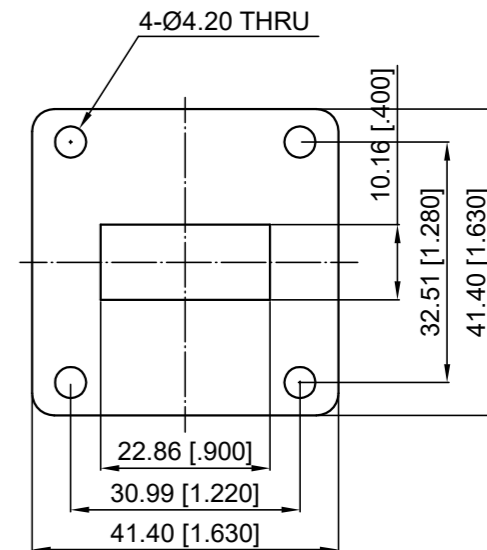
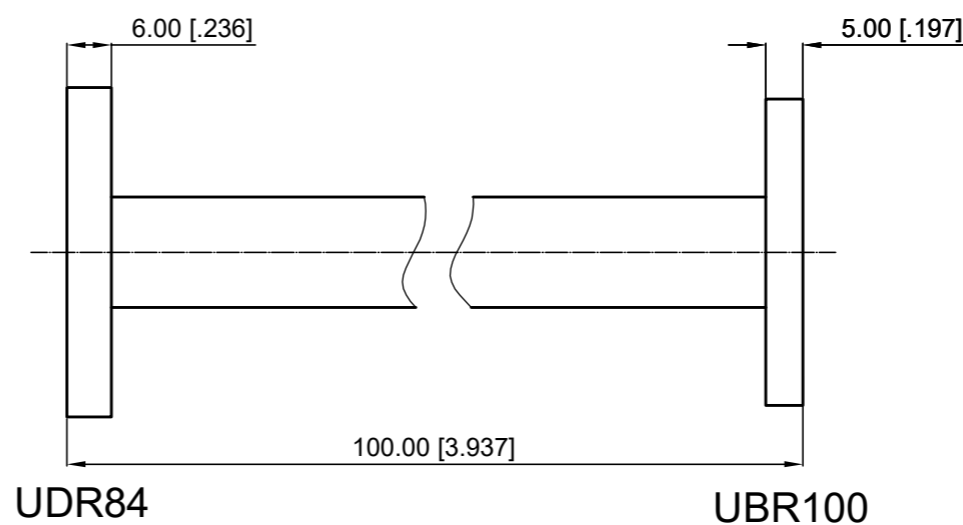
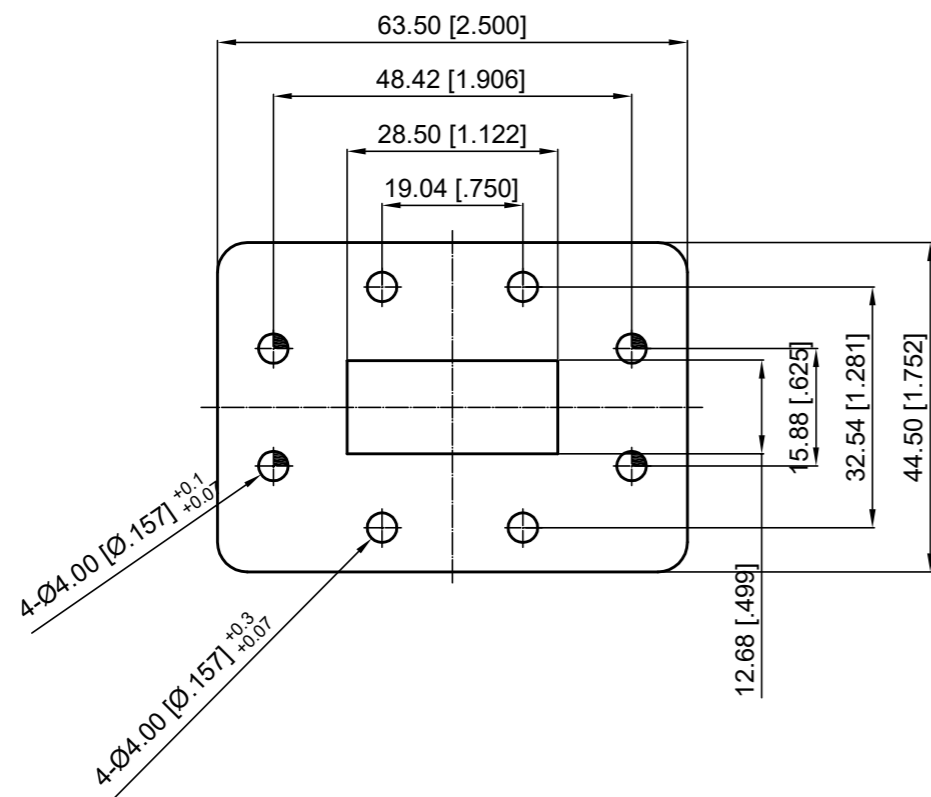
Port 1: WR112 (UDR84)

Port 2: WR90 (UBR100)

**MATERIAL**

Body: Aluminum, Oxidized

Paint: Gray



NOTES:

1. ALL SPECIFICATIONS ARE SUBJECT TO CHANGE WITHOUT NOTICE AT ANY TIME
2. CUSTOMER OUTLINE DRAWING FOR REFERENCE ONLY

Drawn:	W. Y 2023.3.15
Checked:	T. L 2023.3.15
Approved:	A. M 2023.3.15
Unless Otherwise Specified Dimensions are in Millimeters, Dimensions in [ ] are in Inches for Customer Reference Only. Unless Otherwise Specified Tolerance are: .XX ±0.13 [.005"] .X ±0.20 [.008"] X ±0.50 [.019"] .X° ±1° X° ±2°	

Title:	WR112 to WR90 Waveguide Transition, 100mm Length
Part No:	DWT112D1-90-100

**DEEWAVE**  
www.deewave.com

View:

Size:	Scale:	Sheet:	Rev:
A3	1:3	1/1	A