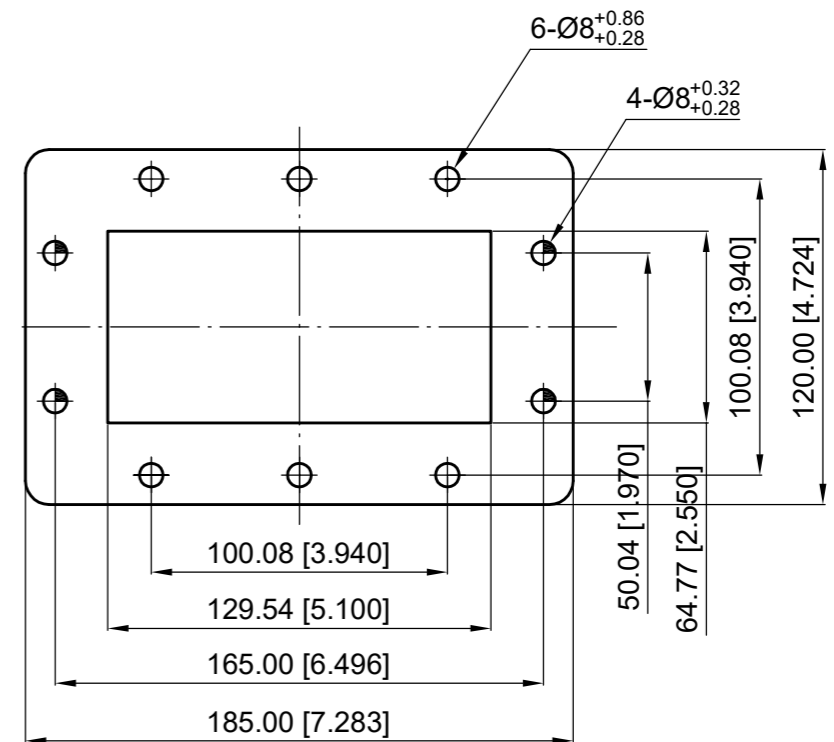
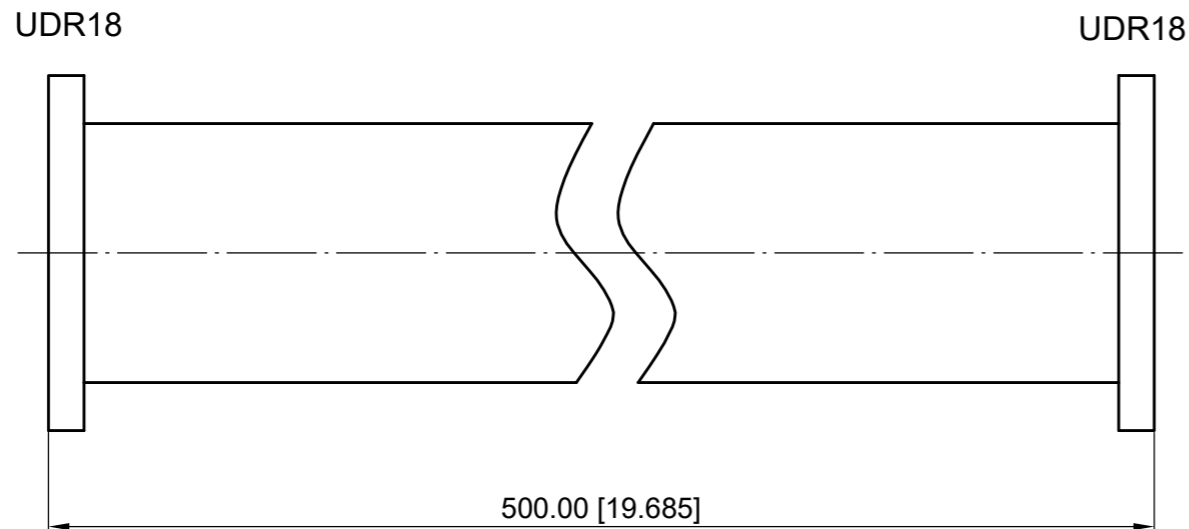


Revisions			
Rev	Description	Date	Approved:
A	Initial Release	2020.12.12	A. M

ELECTRICAL PERFORMANCE
 Frequency Range: 1.45-2.2 GHz
 VSWR: 1.05 max.

MATERIAL
 Body: Aluminum, Oxized
 Paint: Gray



NOTES:
 1. ALL SPECIFICATIONS ARE SUBJECT TO CHANGE WITHOUT NOTICE AT ANY TIME
 2. CUSTOMER OUTLINE DRAWING FOR REFERENCE ONLY

Drawn:	W. Y 2020.12.12
Checked:	T. L 2020.12.12
Approved:	A. M 2020.12.12
Unless Otherwise Specified Dimensions are in Millimeters, Dimensions in [] are in Inches for Customer Reference Only. Unless Otherwise Specified Tolerance are: .XX ±0.13 [.005"] .X ±0.20 [.008"] X ±0.50 [.019"] .X° ±1° X° ±2°	

Title:	Straight Waveguide, WR510(UDR18) at Both Side, Length 500 mm
Part No:	DSW510D1D1-500

DEEWAVE
www.deewave.com

View:

Size: A3	Scale: 2.5:1	Sheet: 1/1	Rev: A
----------	--------------	------------	--------