

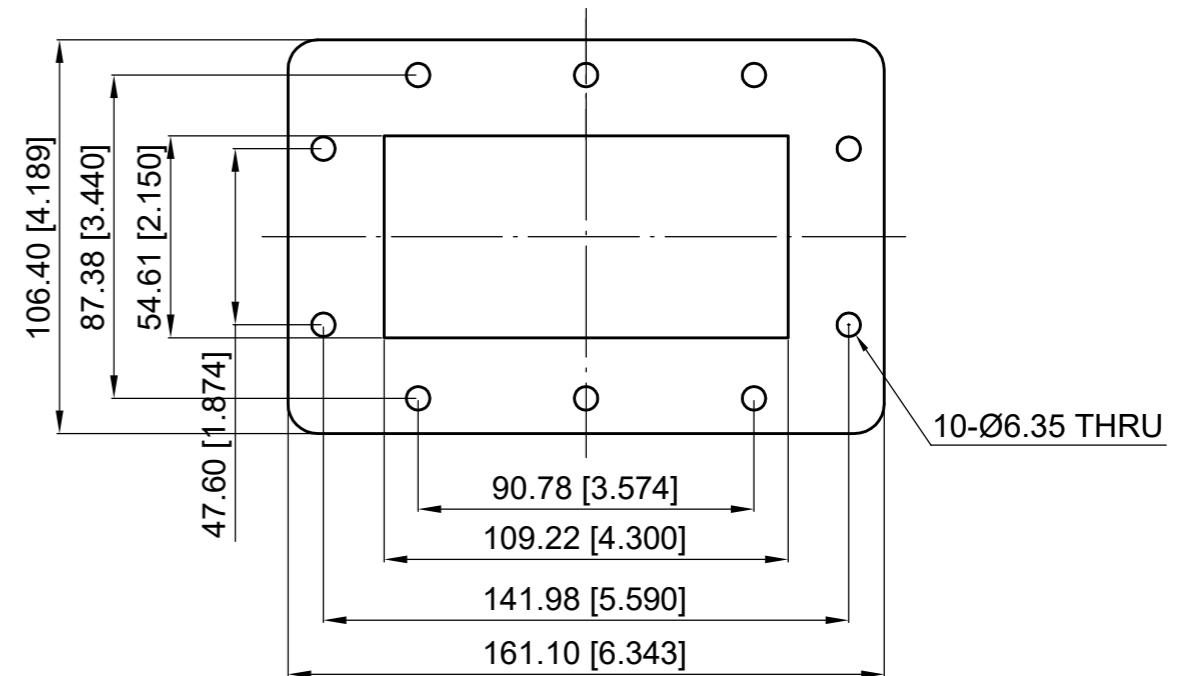
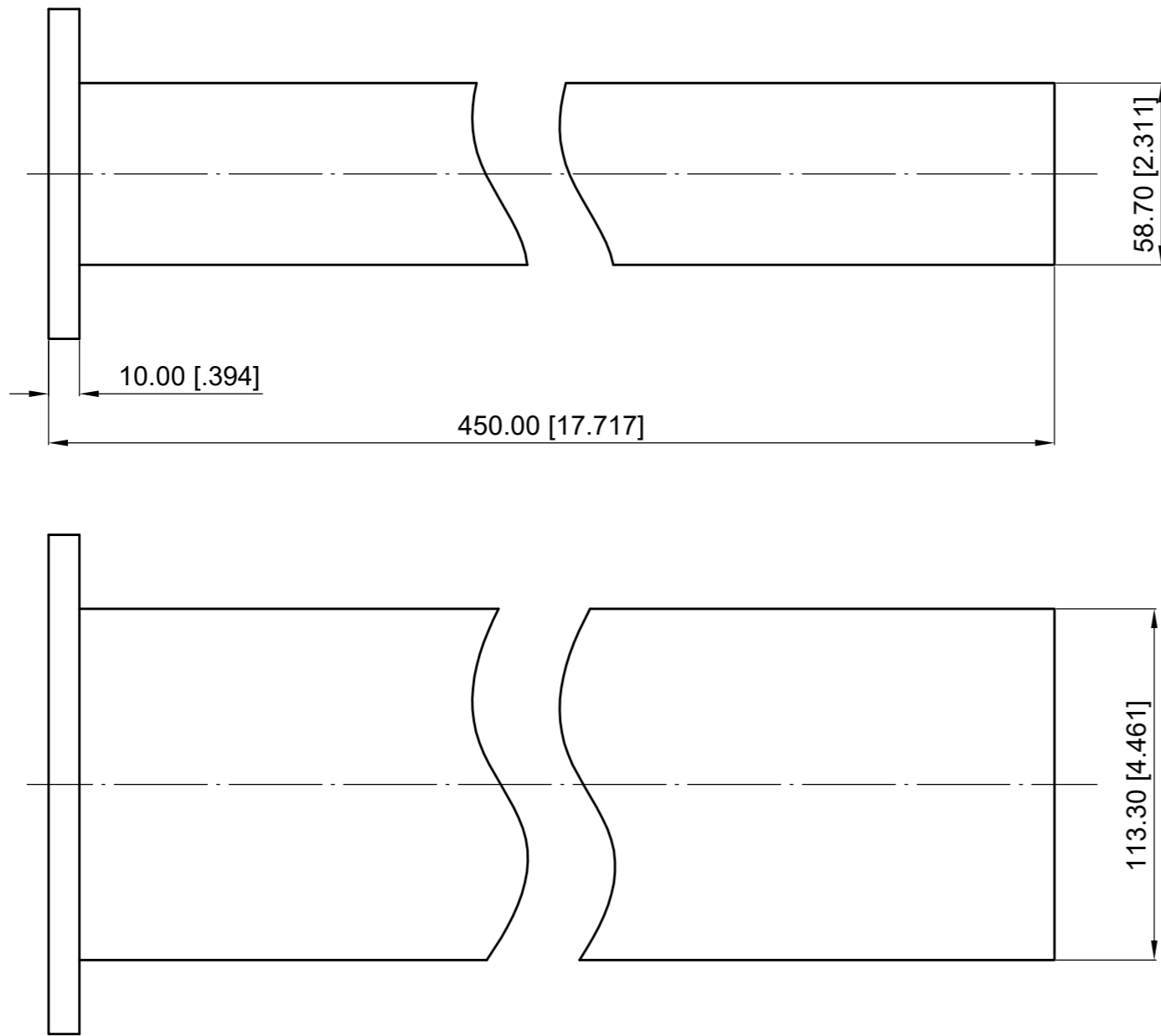
ELECTRICAL PERFORMANCE

- 1. Frequency Range: 1.72-2.61 GHz
- 2. VSWR: 1.03 max.
- 3. WG Type: WR430

MATERIAL

- 1. Body: Aluminium

Revisions			
Rev	Description	Date	Approved:
A	Initial Release	2021.3.9	A. M



- NOTES:
- 1. ALL SPECIFICATIONS ARE SUBJECT TO CHANGE WITHOUT NOTICE AT ANY TIME
 - 2. CUSTOMER OUTLINE DRAWING FOR REFERENCE ONLY

Drawn:	W. Y 2021.3.9
Checked:	T. L 2021.3.9
Approved:	A. M 2021.3.9
Unless Otherwise Specified Dimensions are in Millimeters, Dimensions in [] are in Inches for Customer Reference Only. Unless Otherwise Specified Tolerance are: .XX ±0.13 [.005"] .X ±0.20 [.008"] X ±0.50 [.019"] .X° ±1° X° ±2°	

Title:	WR430 Load
Part No:	DWL430T

DEEWAVE
www.deewave.com

View:

Size: A3	Scale: 1:2	Sheet: 1/1	Rev: A
----------	------------	------------	--------