

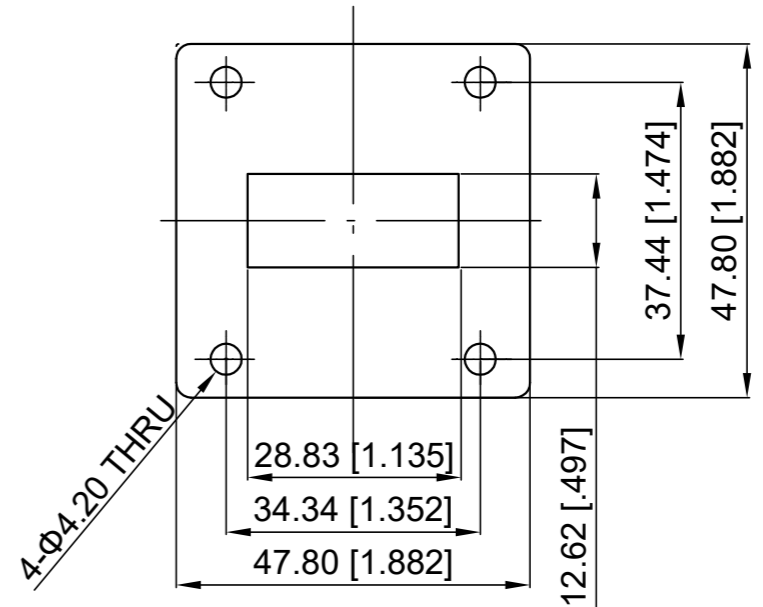
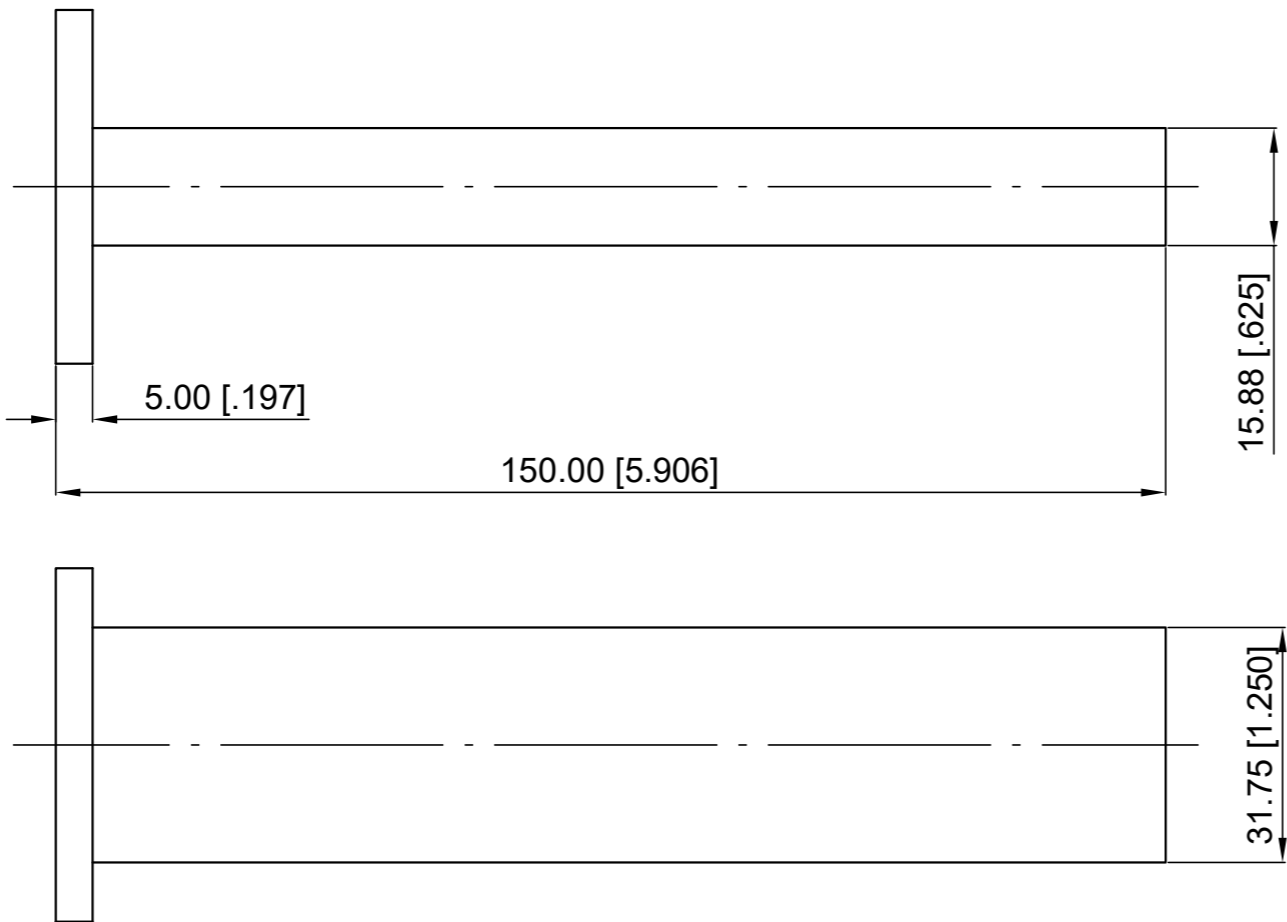
Revisions			
Rev	Description	Date	Approved:
A	Initial Release	2021.3.9	A. M

**ELECTRICAL PERFORMANCE**

- 1. Frequency Range: 6.57-9.99 GHz
- 2. VSWR: 1.03 max.
- 3. WG Type: WR112

**MATERIAL**

- 1. Body: Brass



NOTES:

- 1. ALL SPECIFICATIONS ARE SUBJECT TO CHANGE WITHOUT NOTICE AT ANY TIME
- 2. CUSTOMER OUTLINE DRAWING FOR REFERENCE ONLY

Drawn:	W. Y 2021.3.9
Checked:	T. L 2021.3.9
Approved:	A. M 2021.3.9
<small>Unless Otherwise Specified Dimensions are in Millimeters,  Dimensions in [ ] are in Inches for Customer Reference Only.  Unless Otherwise Specified Tolerance are:  .XX ±0.13 [.005"] .X ±0.20 [.008"] X ±0.50 [.019"]  .X° ±1° X° ±2°</small>	

Title:	<b>WR112 Load</b>
Part No:	<b>DWL112T</b>

**DEEWAVE**  
www.deewave.com

View:

Size: A3	Scale: 1:1	Sheet: 1/1	Rev: A
----------	------------	------------	--------