

Revisions

Rev	Description	Date	Approved:
A	Initial Release	2014.9.16	A. M

ELECTRICAL SPECIFICATIONS

Frequency Range: 8.6-9.6 GHz

Insertion Loss: 0.4 dB max.

Isolation: 20 dB min.

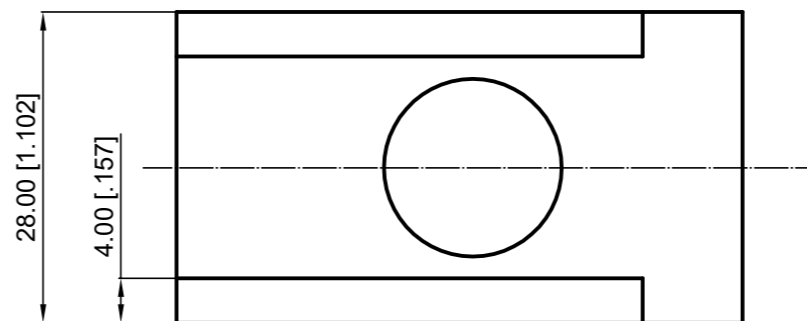
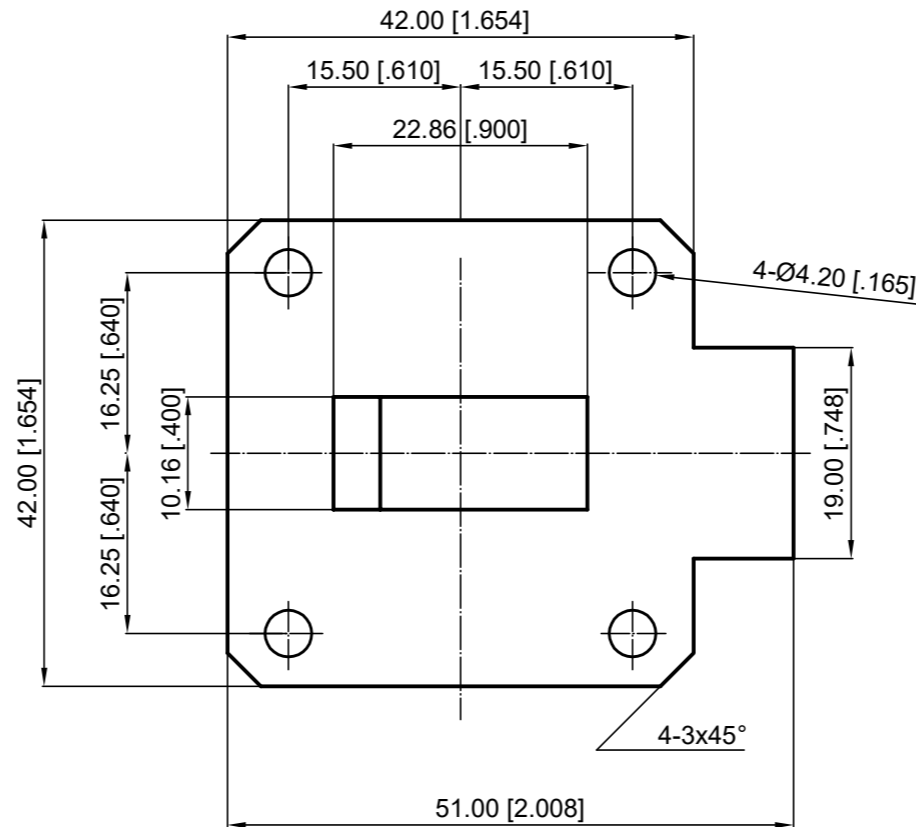
VSWR: 1.25 max.

Forward Power: 100W

Reverse Power: 20W

Waveguide Type: WR90

Director: Clockwise



NOTES:

1. ALL SPECIFICATIONS ARE SUBJECT TO CHANGE WITHOUT NOTICE AT ANY TIME
2. CUSTOMER OUTLINE DRAWING FOR REFERENCE ONLY

Drawn:	W. Y 2014.9.16
Checked:	T. L 2014.9.16
Approved:	A. M 2014.9.16
Unless Otherwise Specified Dimensions are in Millimeters, Dimensions in [] are in Inches for Customer Reference Only. Unless Otherwise Specified Tolerance are: .XX ±0.13 [.005"] .X ±0.20 [.008"] X ±0.50 [.019"] .X° ±1° X° ±2°	

Title:	WR90 Isolator Freq 8.6-9.6 GHz
Part No:	DWI90F8696



View:	
Size:	A3
Scale:	1.5:1
Sheet:	1/1
Rev:	A