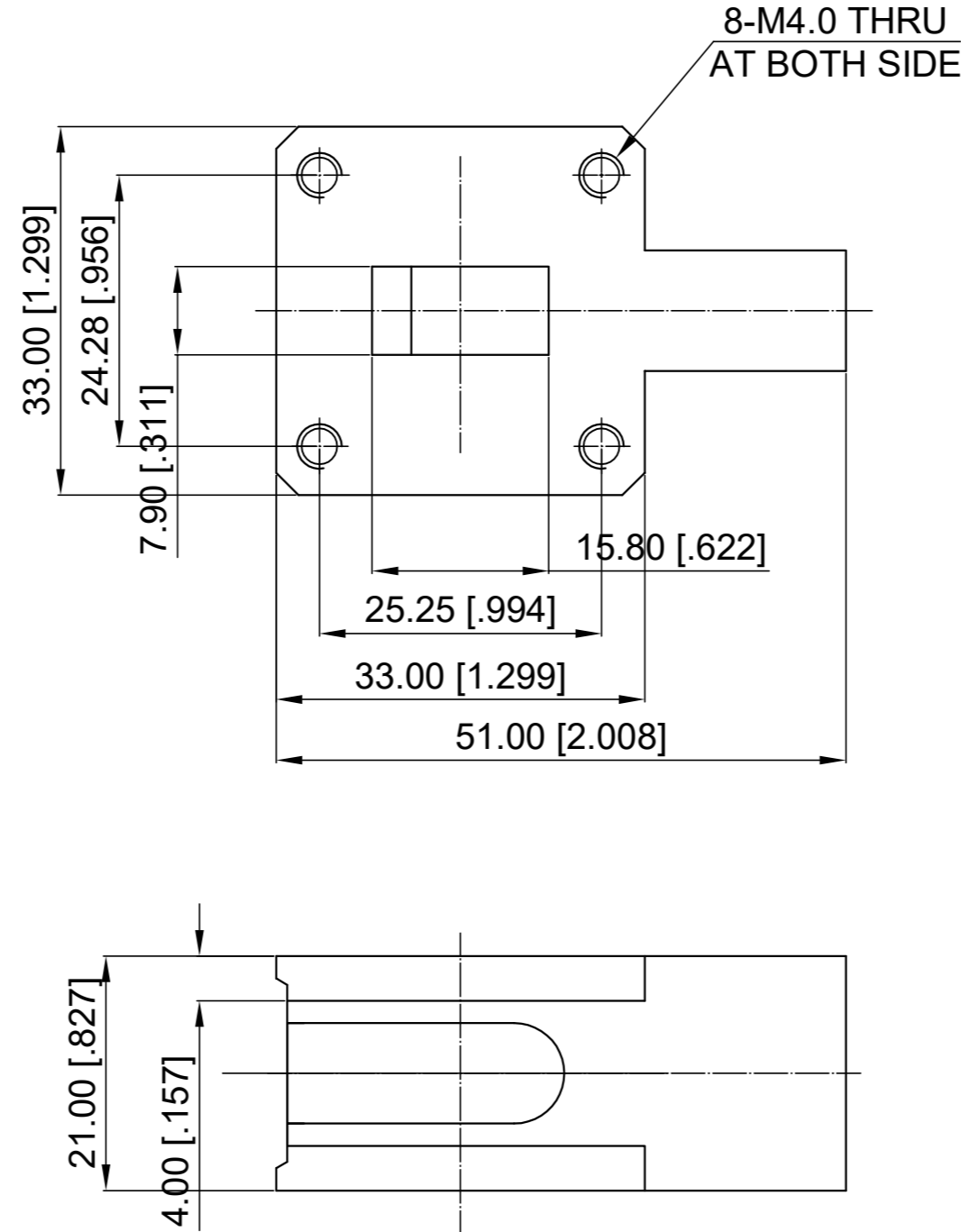


ELECTRICAL SPECIFICATIONS

1. Frequency Range: 14.9-15.4 GHz
2. Insertion Loss: 0.30 dB max.
3. Isolation: 20 dB min.
4. VSWR: 1.20 max.
5. Forward Power: 50 W
6. Reverse Power: 30 W
7. Waveguide Type: WR62
8. Operation Temp.: -40~+85 °C
9. Direction: Clockwise

Revisions			
Rev	Description	Date	Approved:
A	Initial Release	2019.11.18	A. M



NOTES:

1. ALL SPECIFICATIONS ARE SUBJECT TO CHANGE WITHOUT NOTICE AT ANY TIME
2. CUSTOMER OUTLINE DRAWING FOR REFERENCE ONLY

Drawn:	W. Y 2019.11.18
Checked:	T. L 2019.11.18
Approved:	A. M 2019.11.18
Unless Otherwise Specified Dimensions are in Millimeters, Dimensions in [] are in Inches for Customer Reference Only. Unless Otherwise Specified Tolerance are: .XX ±0.13 [.005"] .X ±0.20 [.008"] X ±0.50 [.019"] .X° ±1° X° ±2°	

Title:	WR62 Isolator Freq 14.9-15.4 GHz
Part No:	DWI62F149154

DEEWAVE
www.deewave.com

View:

Size: A3	Scale: 1.5:1	Sheet: 1/1	Rev: A
----------	--------------	------------	--------