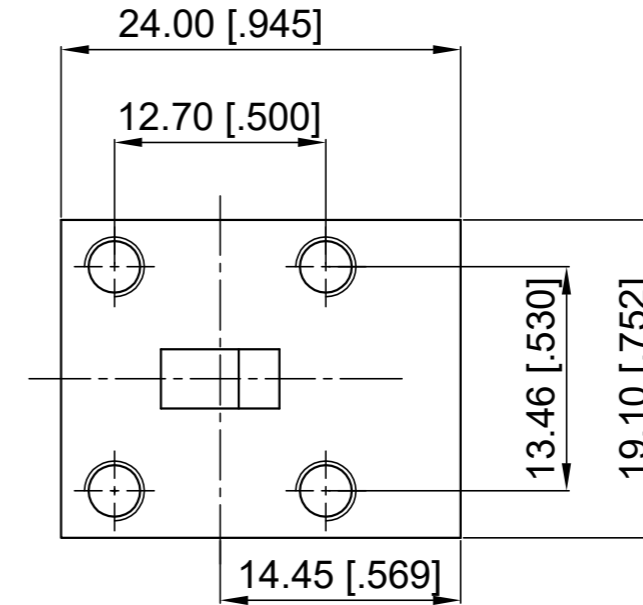
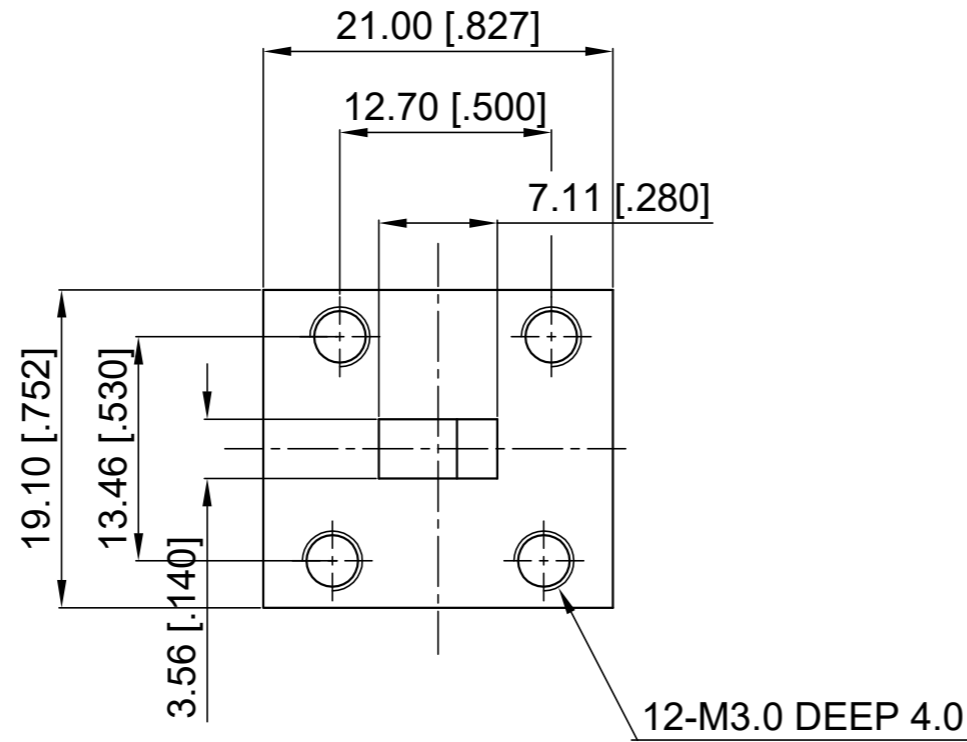
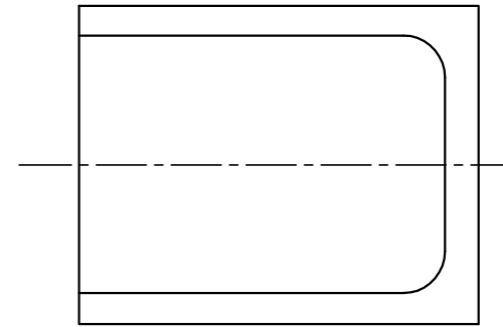


ELECTRICAL SPECIFICATIONS

1. Frequency Range: 27-29.5 GHz
2. Insertion Loss: 0.40 dB max.
3. Isolation: 20 dB min.
4. VSWR: 1.25 max.
5. Waveguide Type: WR28
6. Direction: Clockwise

Revisions			
Rev	Description	Date	Approved:
A	Initial Release	2018.3.19	A. M



- NOTES:
1. ALL SPECIFICATIONS ARE SUBJECT TO CHANGE WITHOUT NOTICE AT ANY TIME
 2. CUSTOMER OUTLINE DRAWING FOR REFERENCE ONLY

Drawn:	W. Y 2018.3.19
Checked:	T. L 2018.3.19
Approved:	A. M 2018.3.19
Unless Otherwise Specified Dimensions are in Millimeters, Dimensions in [] are in Inches for Customer Reference Only. Unless Otherwise Specified Tolerance are: .XX ±0.13 [.005"] .X ±0.20 [.008"] X ±0.50 [.019"] .X° ±1° X° ±2°	

Title:	WR28 Circulator Freq 27-29.5 GHz
Part No:	DWC28F27295

DEEWAVE
www.deewave.com

View:

Size: A3	Scale: 1.5:1	Sheet: 1/1	Rev: A
----------	--------------	------------	--------