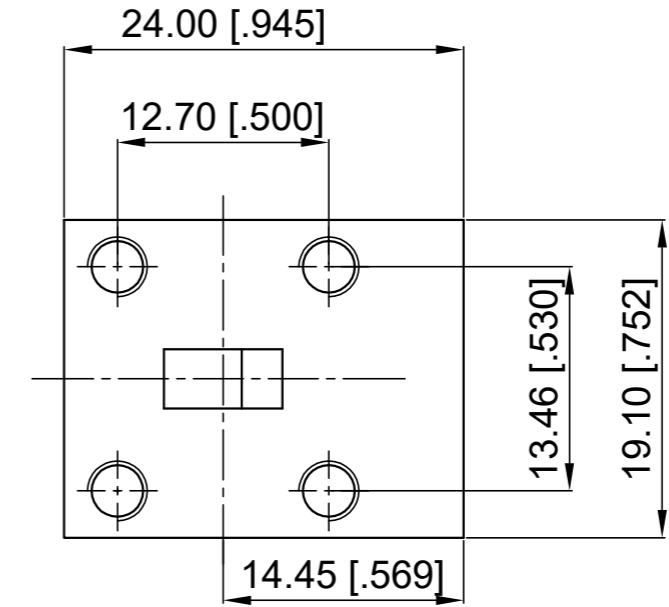
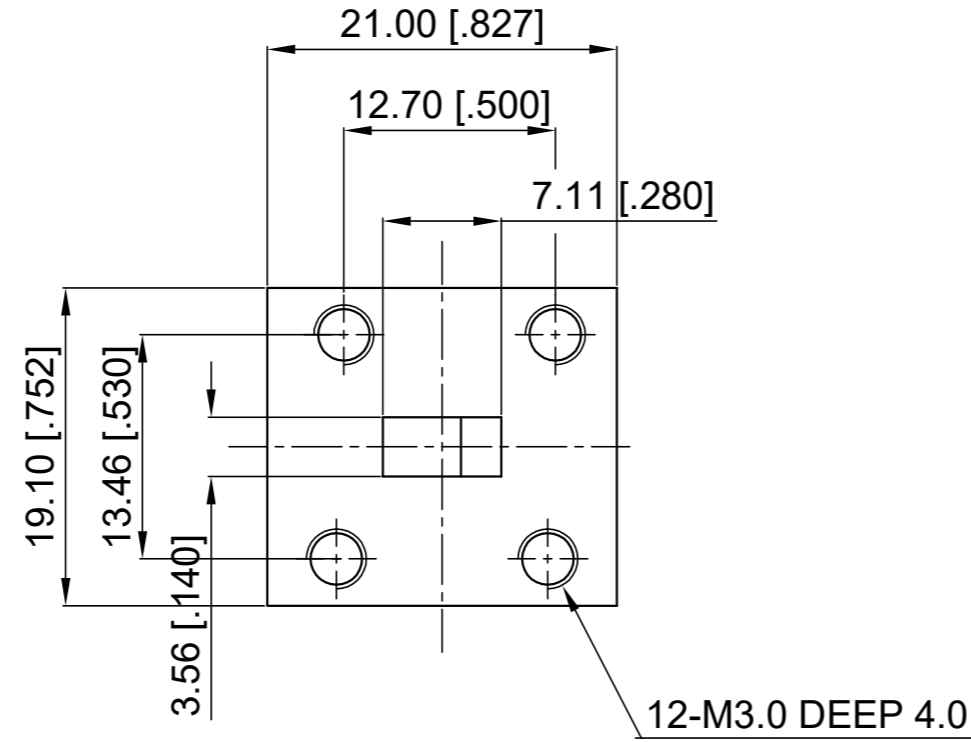
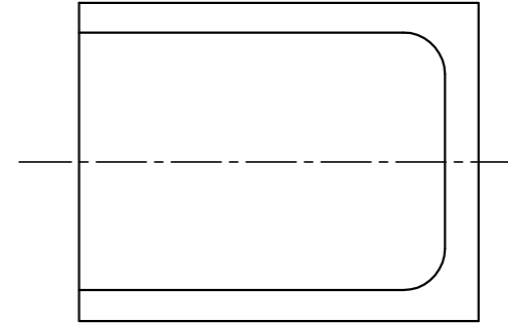


# ELECTRICAL SPECIFICATIONS

1. Frequency Range: 26.5-29.5 GHz
2. Insertion Loss: 0.40 dB max.
3. Isolation: 18 dB min.
4. VSWR: 1.35 max.
5. Waveguide Type: WR28
6. Direction: Clockwise

Revisions			
Rev	Description	Date	Approved:
A	Initial Release	2018.11.21	A. M



NOTES:  
 1. ALL SPECIFICATIONS ARE SUBJECT TO CHANGE WITHOUT NOTICE AT ANY TIME  
 2. CUSTOMER OUTLINE DRAWING FOR REFERENCE ONLY

Drawn:	W. Y 2018.11.21
Checked:	T. L 2018.11.21
Approved:	A. M 2018.11.21
Unless Otherwise Specified Dimensions are in Millimeters, Dimensions in [ ] are in Inches for Customer Reference Only. Unless Otherwise Specified Tolerance are: .XX ±0.13 [.005"] .X ±0.20 [.008"] X ±0.50 [.019"] .X° ±1° X° ±2°	

Title:	WR28 Circulator Freq 26.5-29 GHz
Part No:	DWC28F265295



View:	
Size:	A3
Scale:	1.5:1
Sheet:	1/1
Rev:	A