

Performance Features

Nominal Impedance: 50Ω

Frequency Range: DC-18 GHz

Durability: 500 Cycles

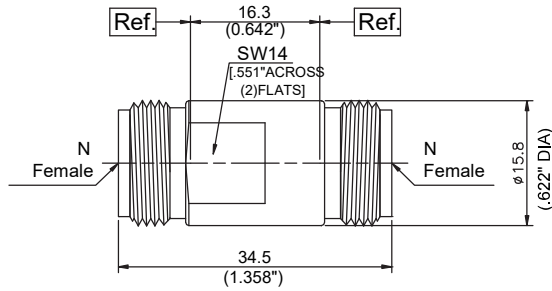
Operating Temperature: -55°C~+165°C

Materials/Finishes

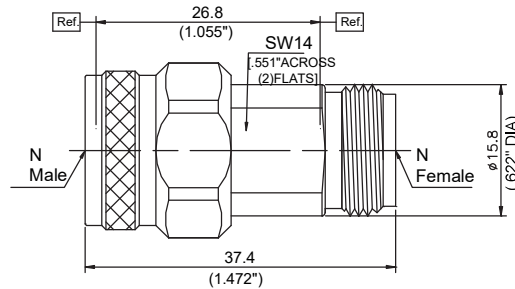
Housing: Type 303 Stainless Steel - Polished & Passivated

Center Contact: Beryllium Copper Plated Gold

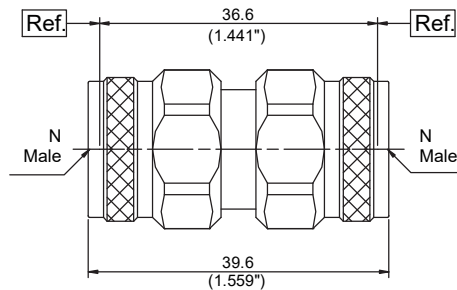
Insulators: PEI



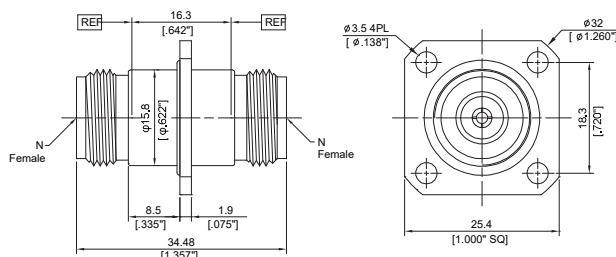
P/N	DPA28028001
Descr.	N Female to N Female
Freq.	DC-18GHz
VSWR	1.15:1(Max)



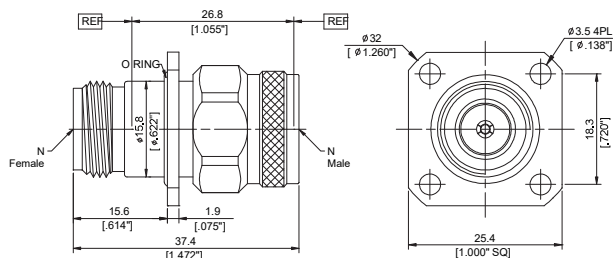
P/N	DPA28028102
Descr.	N Male to N Female
Freq.	DC-18GHz
VSWR	1.15:1(Max)



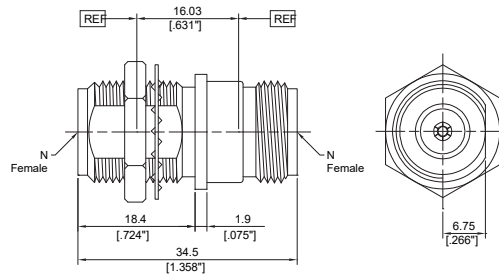
P/N	DPA28128103
Descr.	N Male to N Male
Freq.	DC-18GHz
VSWR	1.15:1(Max)



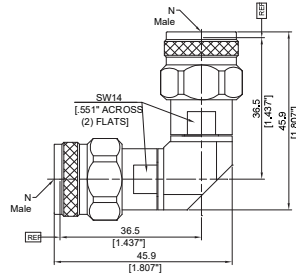
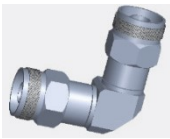
P/N	DPA28028004
Descr.	N Female to N Female, Flange
Freq.	DC-18GHz
VSWR	1.15:1(Max)



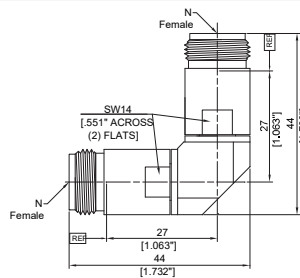
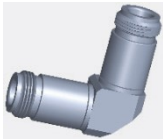
P/N	DPA28028104
Descr.	N Male to N Female, Flange
Freq.	DC-18GHz
VSWR	1.15:1(Max)



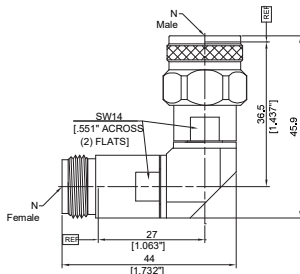
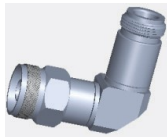
P/N	DPA28028006
Descr.	N F to N F, Bulkhead
Freq.	DC-18GHz
VSWR	1.15:1(Max)



P/N	DPA28128107
Descr.	N Male RA to N Male
Freq.	DC-18GHz
VSWR	1.15:1(Max)



P/N	DPA28028008
Descr.	N Female RA to N Female
Freq.	DC-18GHz
VSWR	1.15:1(Max)



P/N	DPA28028109
Descr.	N Male RA to N Female
Freq.	DC-18GHz
VSWR	1.15:1(Max)