

Performance Features

Nominal Impedance: 50Ω

Durability: 500 Cycles

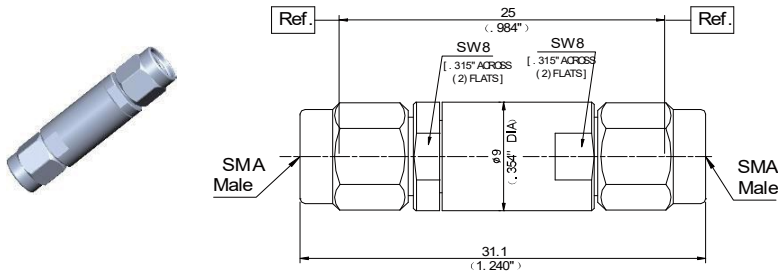
Operating Temperature: -55°C~+125°C

Materials/Finishes

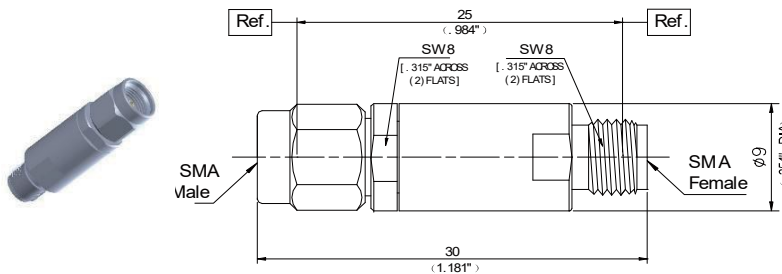
Housing: Type 303 Stainless Steel - Polished & Passivated

Center Contact: Beryllium Copper Plated Gold

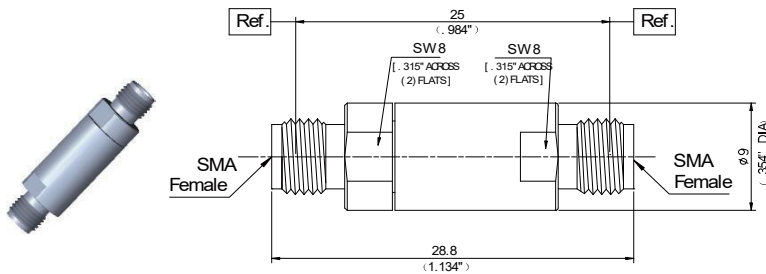
Insulators: PEI/PTFE



P/N	DIDB251101
Descr.	SMA Male to Male inner Block
Freq.	30MHz to 27GHz
VSWR	1.25:1(Max)



P/N	DIDB251002
Descr.	SMA Male to Female inner Block
Freq.	30MHz to 27GHz
VSWR	1.25:1(Max)



P/N	DIDB250003
Descr.	SMA Female to F inner Block
Freq.	30MHz to 27GHz
VSWR	1.25:1(Max)