

Revisions			
Rev	Description	Date	Approved:
A	Initial Release	2020.12.24	A. M

ELECTRICAL PERFORMANCE

Frequency Range: 26.5-40 GHz

VSWR: 1.30 max.

Insertion Loss: 1.20 dB max.

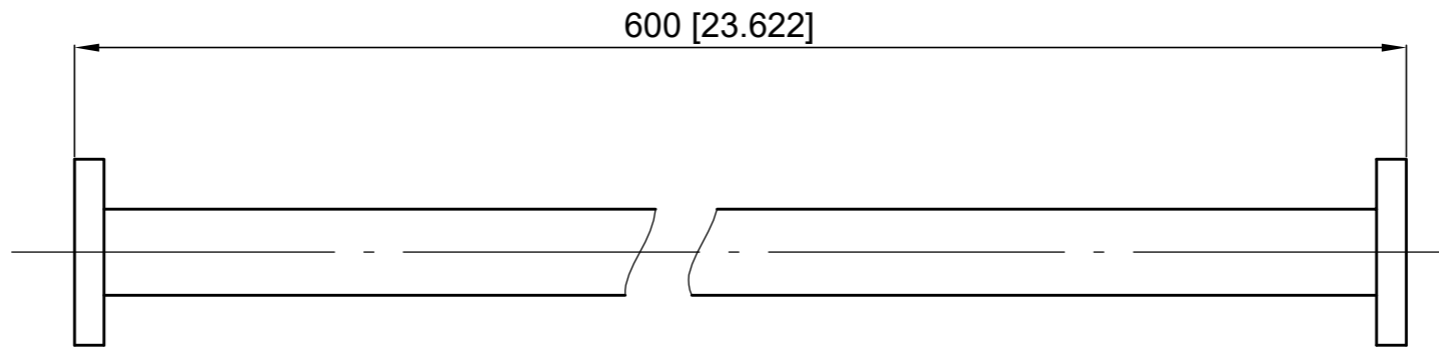
Min. Bend Radius: 38mm/E 76mm/H

Max. Torsion Angle: 465°/m

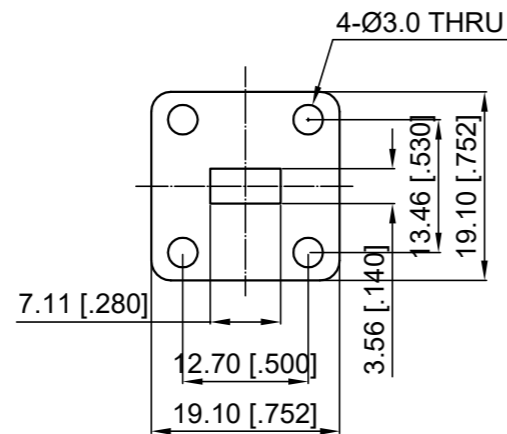
Flange Material: Nickel-plated Brass

Material of Waveguide Core: Silver-plated Brass

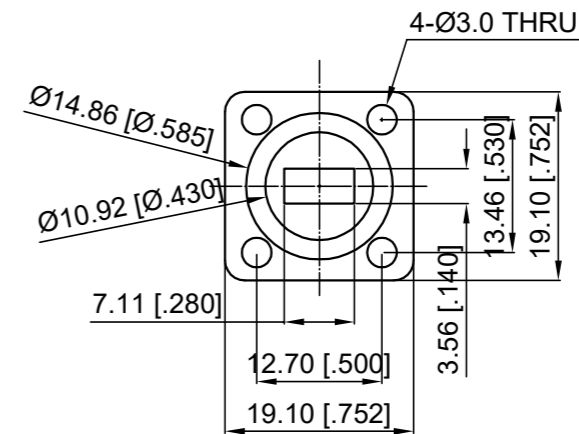
Jacket Material: Vulcanized Silicone Rubber



UBR320



PBR320



NOTES:

1. ALL SPECIFICATIONS ARE SUBJECT TO CHANGE WITHOUT NOTICE AT ANY TIME
2. CUSTOMER OUTLINE DRAWING FOR REFERENCE ONLY

Drawn:	W. Y 2020.12.24
Checked:	T. L 2020.12.24
Approved:	A. M 2020.12.24
Unless Otherwise Specified Dimensions are in Millimeters, Dimensions in [] are in Inches for Customer Reference Only. Unless Otherwise Specified Tolerance are: .XX ±0.13 [.005"] .X ±0.20 [.008"] X ±0.50 [.019"] .X° ±1° X° ±2°	

Title:	WR28 Flexible Twistable, UBR to PBR, Length 600 mm
Part No:	DFTW28B1B2-600



View:	
Size:	A3
Scale:	1:4
Sheet:	1/1
Rev:	A