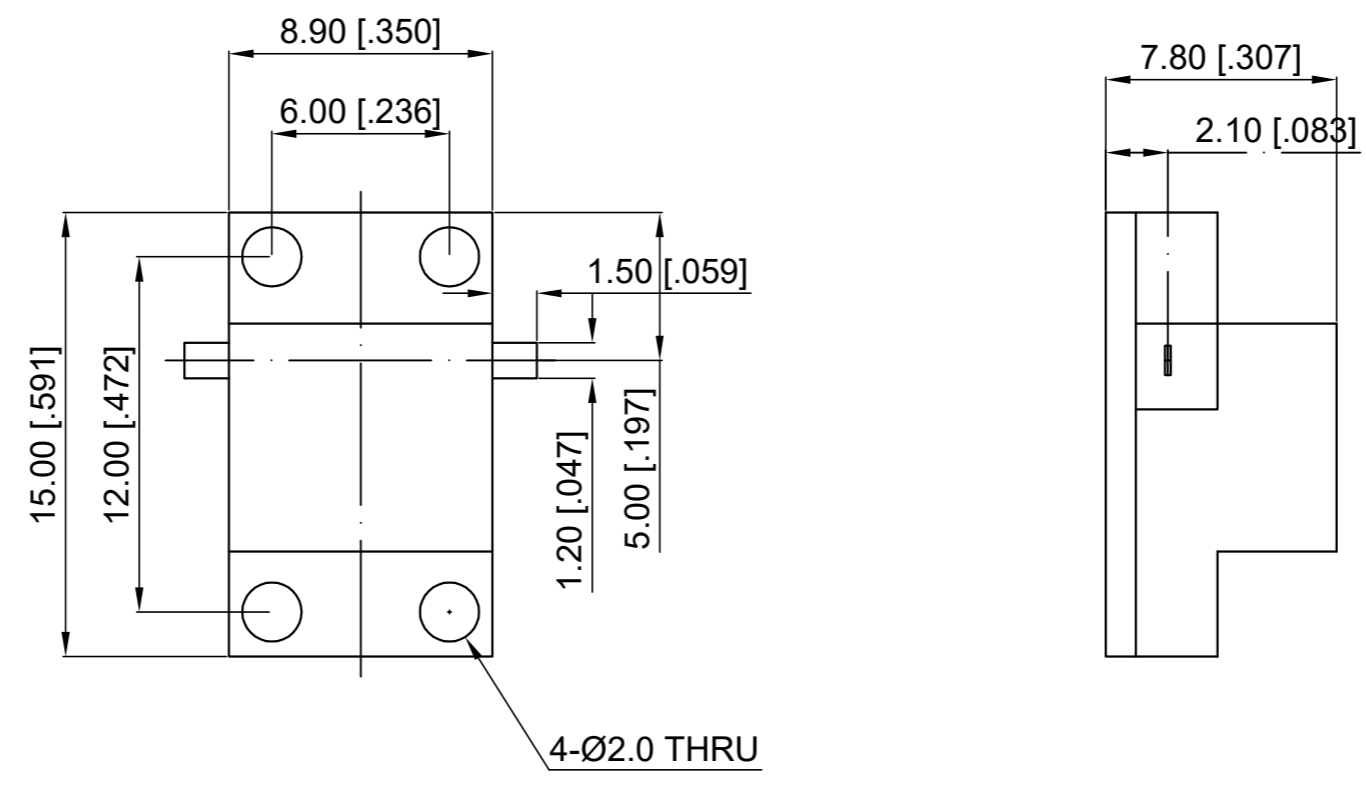



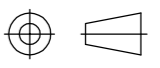
ELECTRICAL SPECIFICATIONS

Frequency Range: 6.4-7.2 GHz
 Impedance: 50 Ohm
 Insertion Loss: 0.5 dB max.
 Isolation: 20 dB min.
 VSWR: 1.25 max.
 Direction: Clockwise
 Operation Temp.: -40~+85°C

Revisions			
Rev	Description	Date	Approved:
A	Initial Release	2018.11.13	A. M



NOTES:
 1. ALL SPECIFICATIONS ARE SUBJECT TO CHANGE WITHOUT NOTICE AT ANY TIME
 2. CUSTOMER OUTLINE DRAWING FOR REFERENCE ONLY

Drawn: W. Y 2018.11.13	Title: Drop-in Isolator Freq 6.4-7.2 GHz	 www.deewave.com			
Checked: T. L 2018.11.13					
Approved: A. M 2018.11.13		Part No: DDI640720	View: 		
Unless Otherwise Specified Dimensions are in Millimeters, Dimensions in [] are in Inches for Customer Reference Only. Unless Otherwise Specified Tolerance are: .XX ±0.13 [.005"] .X ±0.20 [.008"] X ±0.50 [.019"] .X° ±1° X° ±2°		Size: A3	Scale: 4:1	Sheet: 1/1	Rev: A