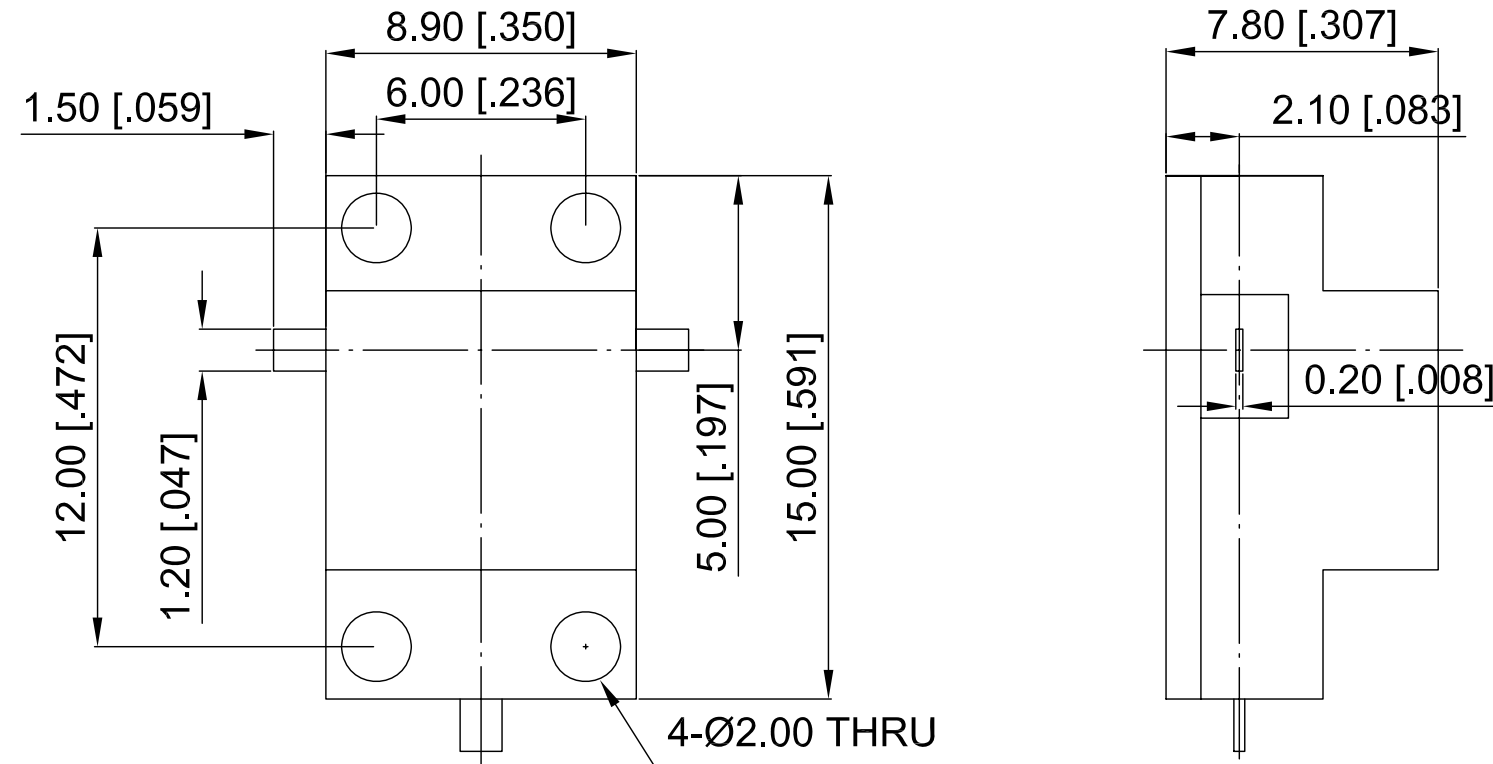


ELECTRICAL SPECIFICATIONS

Frequency Range: 9.3-9.5 GHz
 Impedance: 50 Ohm
 Insertion Loss: 0.3 dB max.
 Isolation: 20 dB min.
 VSWR: 1.25 max.
 Forward Power: 5 W

Revisions			
Rev	Description	Date	Approved:
A	Initial Release	2017.6.9	A. M




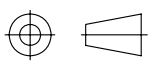
NOTES:

1. ALL SPECIFICATIONS ARE SUBJECT TO CHANGE WITHOUT NOTICE AT ANY TIME
2. CUSTOMER OUTLINE DRAWING FOR REFERENCE ONLY

Drawn:	W. Y 2017.6.9
Checked:	T. L 2017.6.9
Approved:	A. M 2017.6.9
Unless Otherwise Specified Dimensions are in Millimeters, Dimensions in [] are in Inches for Customer Reference Only. Unless Otherwise Specified Tolerance are: .XX ±0.13 [.005"] .X ±0.20 [.008"] X ±0.50 [.019"] .X° ±1° X° ±2°	

Title:	Drop-in Circulator Freq 9.3-9.5 GHz
Part No:	DDC930950

DEEWAVE 
www.deewave.com

View: 

Size:	Scale:	Sheet:	Rev:
A3	4:1	1/1	A