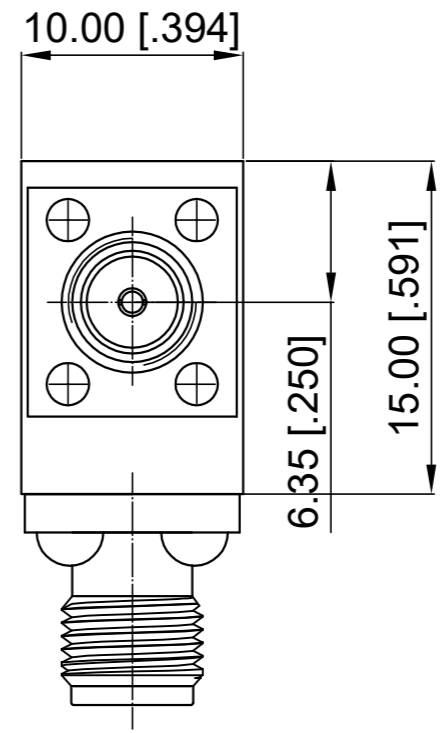
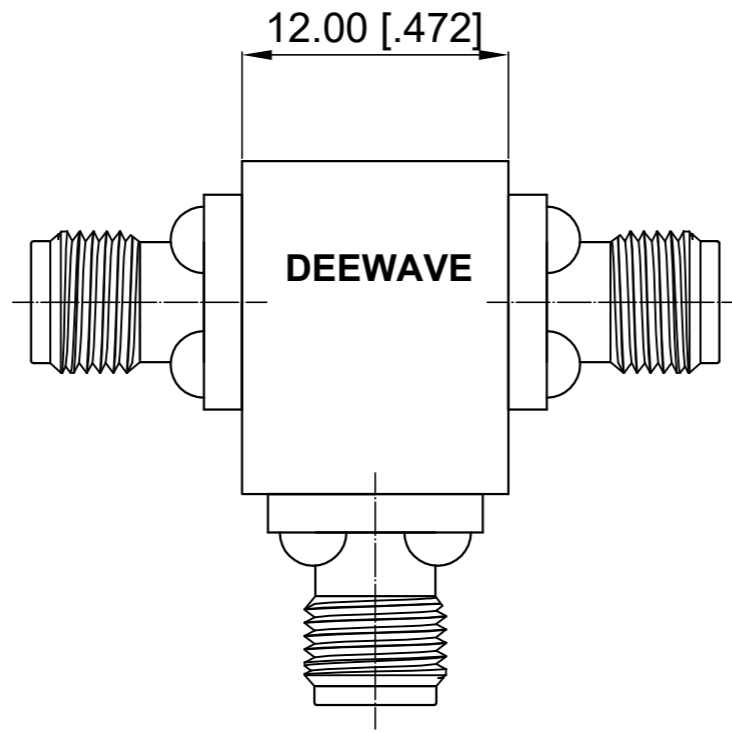


**ELECTRICAL SPECIFICATIONS**

Frequency Range: 10-15 GHz  
 Impedance: 50 Ohm  
 Insertion Loss: 0.60 dB max.  
 Isolation: 17 dB min.  
 VSWR: 1.35 max.  
 Direction: Clockwise

Revisions			
Rev	Description	Date	Approved:
A	Initial Release	2020.7.30	A. M



NOTES:  
 1. ALL SPECIFICATIONS ARE SUBJECT TO CHANGE WITHOUT NOTICE AT ANY TIME  
 2. CUSTOMER OUTLINE DRAWING FOR REFERENCE ONLY

Drawn:	W. Y 2020.7.30
Checked:	T. L 2020.7.30
Approved:	A. M 2020.7.30
Unless Otherwise Specified Dimensions are in Millimeters, Dimensions in [ ] are in Inches for Customer Reference Only. Unless Otherwise Specified Tolerance are: .XX ±0.13 [.005"]    .X ±0.20 [.008"]    X ±0.50 [.019"] .X° ±1°                    X° ±2°	

Title:	SMA Female Circulator Freq 10-15 GHz
Part No:	DCC10001500B



View:	
Size:	A3
Scale:	3:1
Sheet:	1/1
Rev:	A