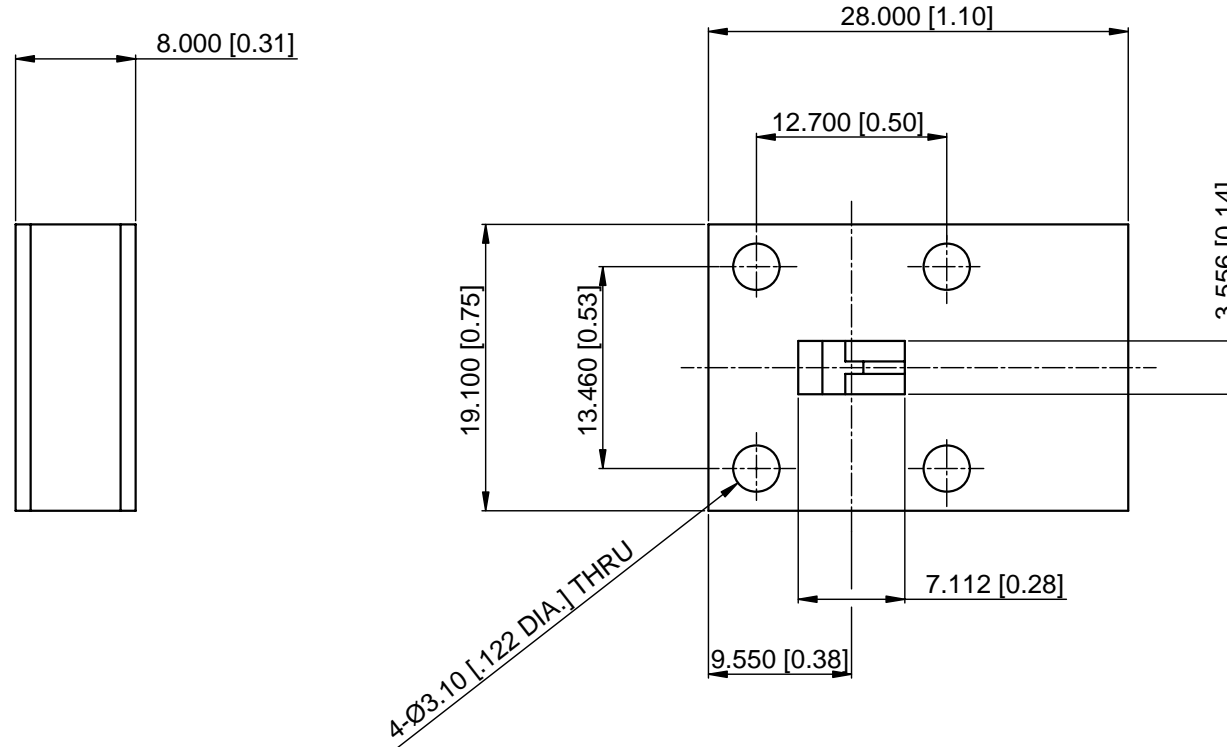


Product Model: WR28 Isolator  
 Frequency Range (GHz): 29-31GHz  
 Insertion Loss : 0.40 dB Max.  
 Isolation: 20 dB Min.  
 VSWR: 1.25 Max.  
 Forward Power: 1W  
 Reverse Power: 1W

| Revisions |                 |          |           |
|-----------|-----------------|----------|-----------|
| Rev       | Description     | Date     | Approved: |
| A         | Initial Release | 09/13/13 | A. M      |



NOTES:

- ALL SPECIFICATIONS ARE SUBJECT TO CHANGE WITHOUT NOTICE AT ANY TIME
- CUSTOMER OUTLINE DRAWING FOR REFERENCE ONLY

|  |               |
|--|---------------|
| Drawn:   | W. Y 09/13/13 |
| Checked:   | T. L 09/13/13 |
| Approved:  | A. M 09/13/13 |
| Unless Otherwise Specified Dimensions are in Millimeters,<br>Dimensions in [ ] are in Inches for Customer Reference Only.<br>Unless Otherwise Specified Tolerance are:<br>.XX ±0.13 [.005"] .X ±0.20 [.008"] X ±0.50 [.019"]<br>.X° ±1° X° ±2° |               |

|          |                        |
|----------|------------------------|
| Title:   | WR28 Isolator 29-31GHz |
| Part No: | DWI29003100            |

**DEEWAVE**  
[www.deewave.com](http://www.deewave.com)

View:

|          |            |            |        |
|----------|------------|------------|--------|
| Size: A3 | Scale: 2:1 | Sheet: 1/1 | Rev: A |
|----------|------------|------------|--------|