

6

5

4

3

2

1

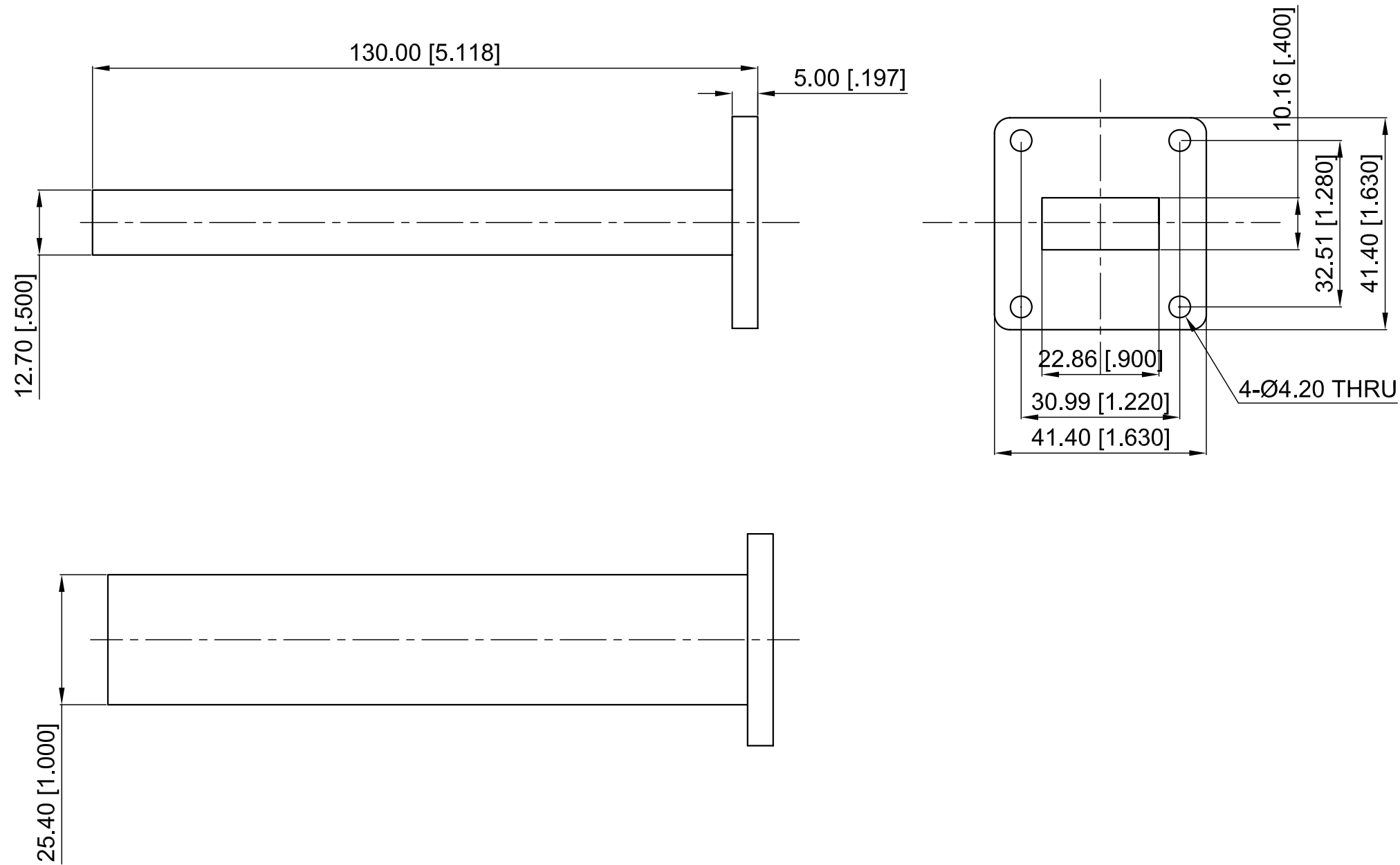
Revisions			
Rev	Description	Date	Approved:
A	Initial Release	2017.3.3	A. M

**ELECTRICAL PERFORMANCE**

- 1. Frequency Range: 8.2-12.4 GHz
- 2. VSWR: 1.03 max.
- 3. WG Type: WR90

**MATERIAL**

- 1. Body: Brass



**NOTES:**

- 1. ALL SPECIFICATIONS ARE SUBJECT TO CHANGE WITHOUT NOTICE AT ANY TIME
- 2. CUSTOMER OUTLINE DRAWING FOR REFERENCE ONLY

Drawn:	W. Y 2017.3.3
Checked:	T. L 2017.3.3
Approved:	A. M 2017.3.3
Unless Otherwise Specified Dimensions are in Millimeters, Dimensions in [ ] are in Inches for Customer Reference Only. Unless Otherwise Specified Tolerance are: .XX ±0.13 [.005"] .X ±0.20 [.008"] X ±0.50 [.019"] .X° ±1° X° ±2°	

Title:	WR90 Load
Part No:	DWL90T

**DEEWAVE**  
www.deewave.com

View:

Size: A3	Scale: 1:1	Sheet: 1/1	Rev: A
----------	------------	------------	--------

6

5

4

3

2

1