

6

5

4

3

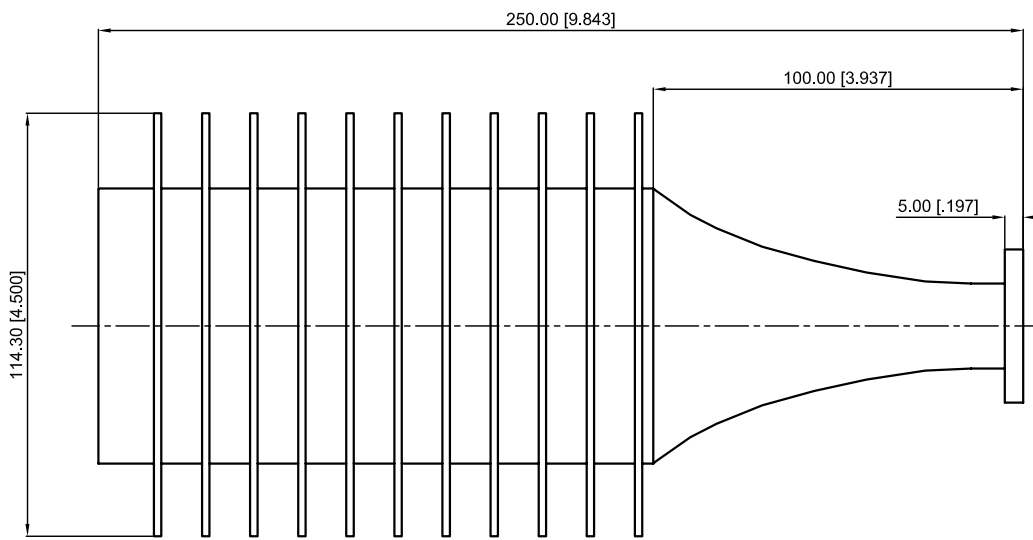
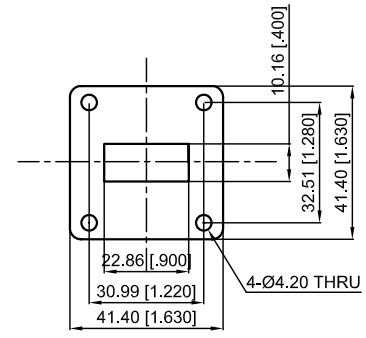
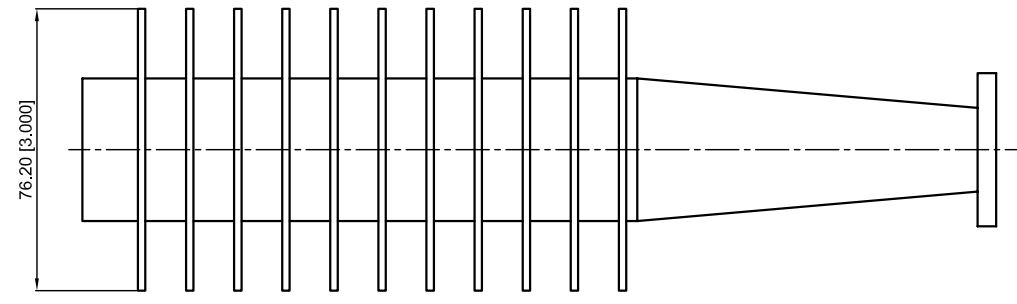
2

1

| Revisions |                 |           |           |
|-----------|-----------------|-----------|-----------|
| Rev       | Description     | Date      | Approved: |
| A         | Initial Release | 2017.2.22 | A. M      |

**ELECTRICAL PERFORMANCE**  
 1. Frequency Range: 8.2-12.4 GHz  
 2. VSWR: 1.25 max.  
 3. Load Power: 250 W  
 4. WG Type: WR90

**MATERIAL**  
 1. Body: Brass



**NOTES:**  
 1. ALL SPECIFICATIONS ARE SUBJECT TO CHANGE WITHOUT NOTICE AT ANY TIME  
 2. CUSTOMER OUTLINE DRAWING FOR REFERENCE ONLY

|  |                |
|--|----------------|
| Drawn:   | W. Y 2017.2.22 |
| Checked:   | T. L 2017.2.22 |
| Approved:  | A. M 2017.2.22 |
| Unless Otherwise Specified Dimensions are in Millimeters,<br>Dimensions in [ ] are in Inches for Customer Reference Only.<br>Unless Otherwise Specified Tolerance are:<br>.XX ±0.13 [.005"] .X ±0.20 [.008"] X ±0.50 [.019"]<br>.X° ±1° X° ±2° |                |

|          |                 |
|----------|-----------------|
| Title:   | WR90 Load, 250W |
| Part No: |                 |



|        |     |
|--------|-----|
| View:  |     |
| Size:  | A3  |
| Scale: | 1:2 |
| Sheet: | 1/1 |
| Rev:   | A   |

6

5

4

3

2

1