

6

5

4

3

2

1

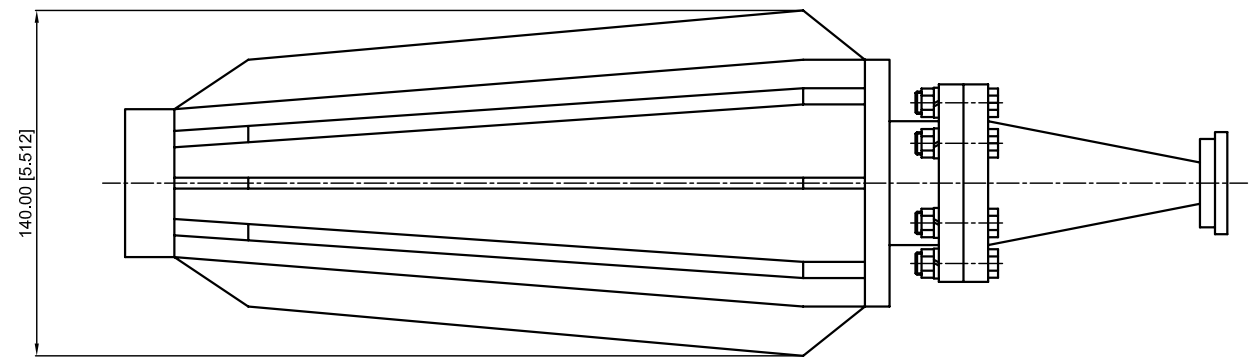
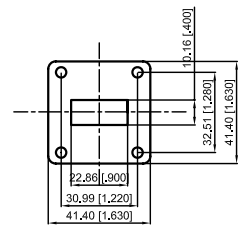
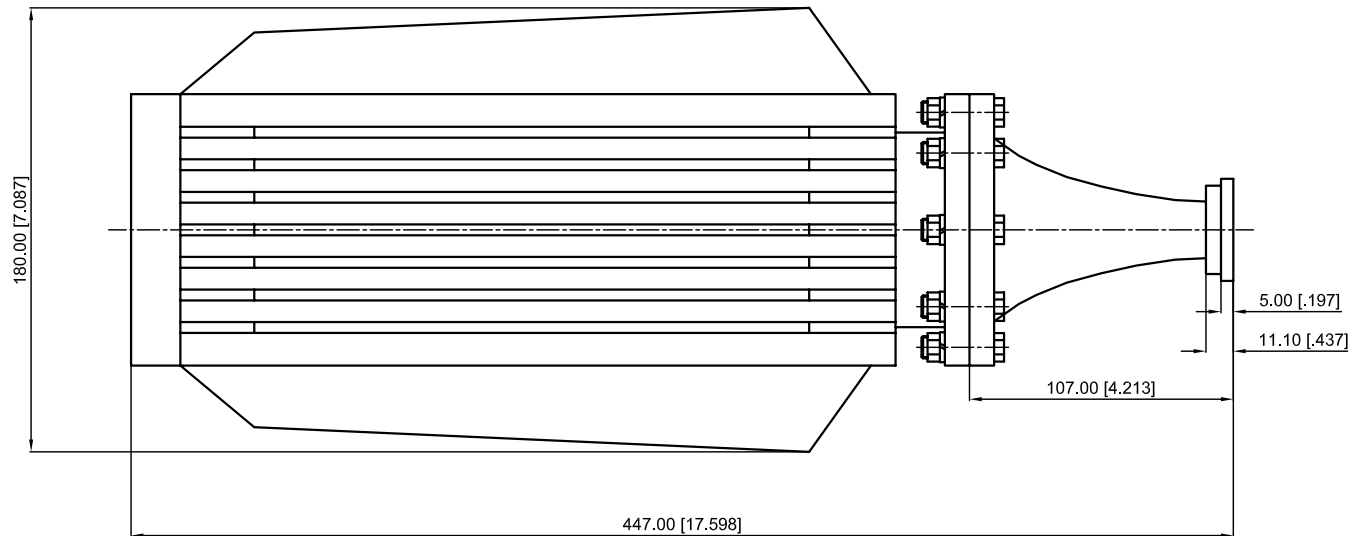
Revisions			
Rev	Description	Date	Approved:
A	Initial Release	2016.9.1	A. M

ELECTRICAL PERFORMANCE

- 1. Frequency Range: 8.2-12.4 GHz
- 2. VSWR: 1.25 max.
- 3. Load Power: 1000 W
- 4. Peak Power: 20 KW
- 5. WG Type: WR90

MATERIAL

- 1. Body: Brass



NOTES:

- 1. ALL SPECIFICATIONS ARE SUBJECT TO CHANGE WITHOUT NOTICE AT ANY TIME
- 2. CUSTOMER OUTLINE DRAWING FOR REFERENCE ONLY

Drawn:	W. Y 2016.9.1
Checked:	T. L 2016.9.1
Approved:	A. M 2016.9.1
Unless Otherwise Specified Dimensions are in Millimeters, Dimensions in [] are in Inches for Customer Reference Only. Unless Otherwise Specified Tolerance are: .XX ±0.13 [.005"] .X ±0.20 [.008"] X ±0.50 [.019"] .X° ±1° X° ±2°	

Title:	WR90 Load, 1000W
Part No:	DWL90-1000



View:	
Size:	A3
Scale:	1:3
Sheet:	1/1
Rev:	A

6

5

4

3

2

1