

6

5

4

3

2

1

Revisions

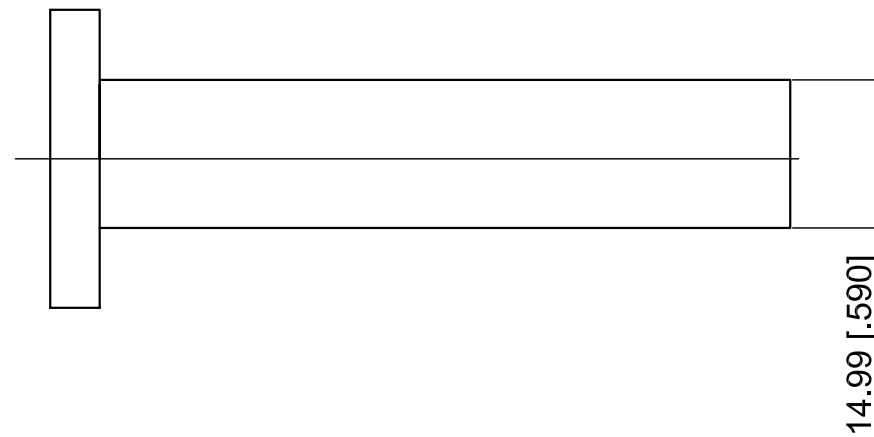
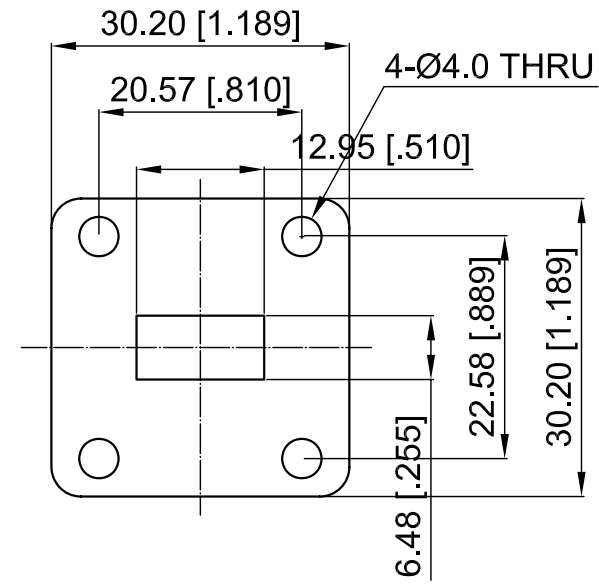
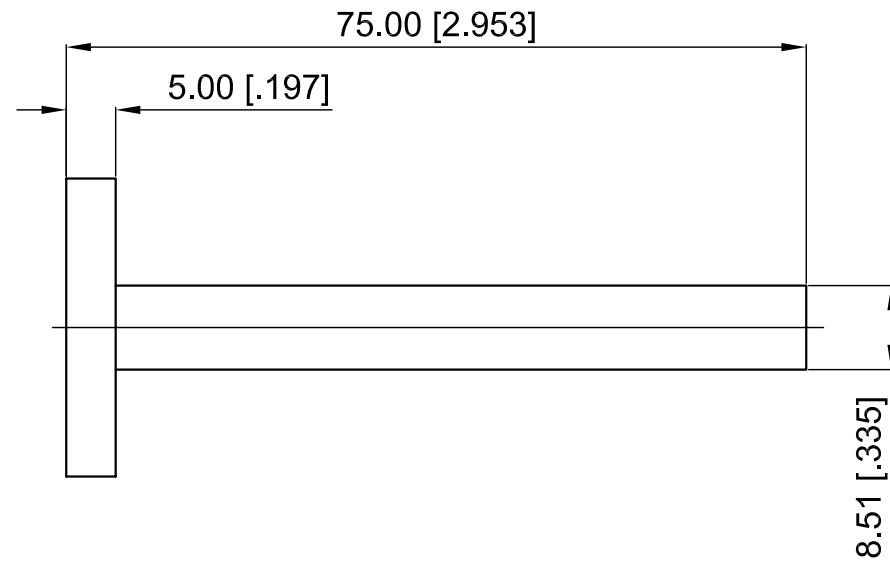
Rev	Description	Date	Approved:
A	Initial Release	2017.3.9	A. M

ELECTRICAL PERFORMANCE

- 1. Frequency Range: 14.5-22 GHz
- 2. VSWR: 1.03 max.
- 3. WG Type: WR51

MATERIAL

- 1. Body: Brass



NOTES:

- 1. ALL SPECIFICATIONS ARE SUBJECT TO CHANGE WITHOUT NOTICE AT ANY TIME
- 2. CUSTOMER OUTLINE DRAWING FOR REFERENCE ONLY

Drawn:	W. Y 2017.3.9
Checked:	T. L 2017.3.9
Approved:	A. M 2017.3.9
Unless Otherwise Specified Dimensions are in Millimeters, Dimensions in [] are in Inches for Customer Reference Only. Unless Otherwise Specified Tolerance are: .XX ±0.13 [.005"] .X ±0.20 [.008"] X ±0.50 [.019"] .X° ±1° X° ±2°	

Title:	WR51 Load
Part No:	



View:			
Size:	Scale:	Sheet:	Rev:
A3	1.5:1	1/1	A

6

5

4

3

2

1