

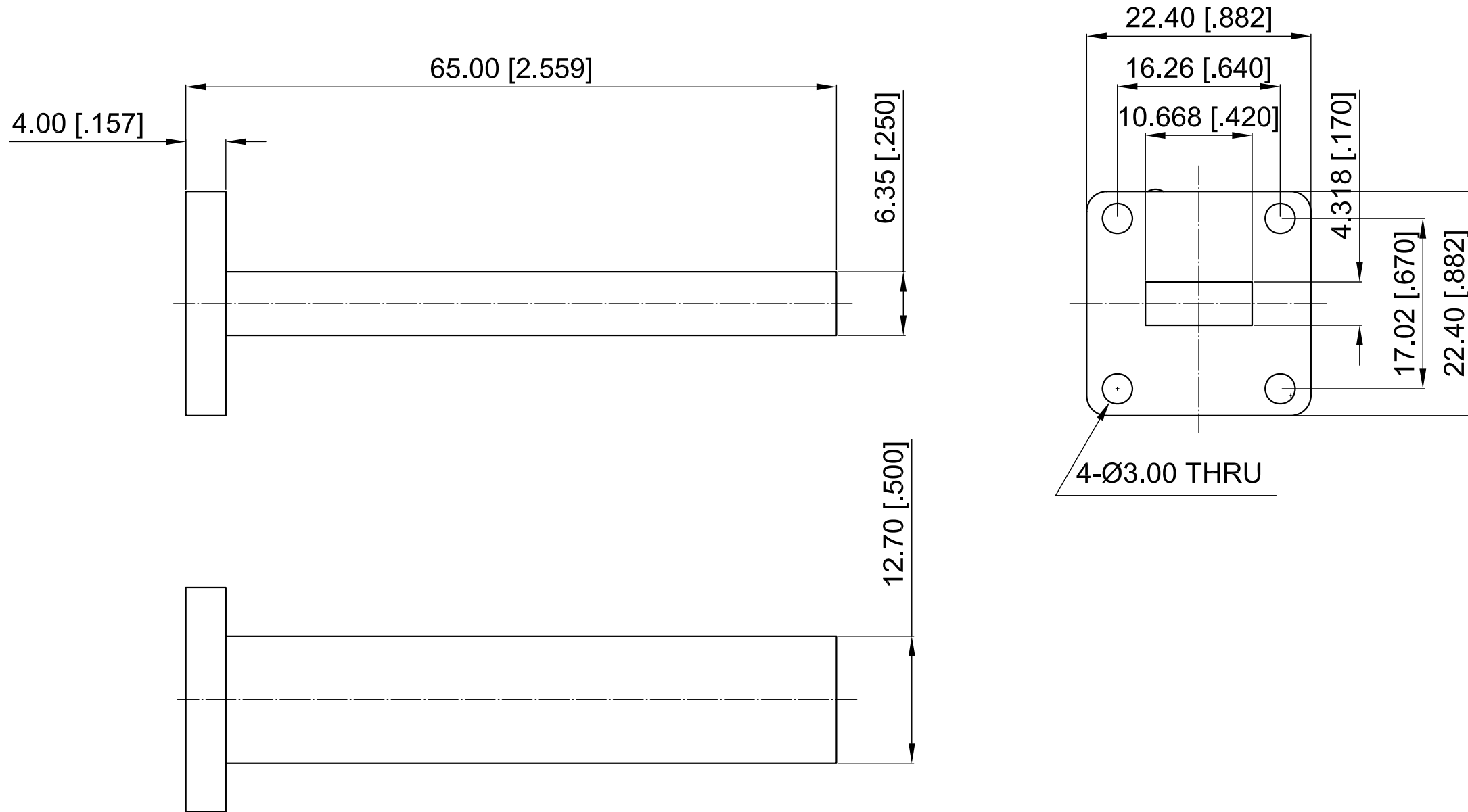
**ELECTRICAL PERFORMANCE**

- 1. Frequency Range: 17.6-26.7 GHz
- 2. VSWR: 1.03 max.
- 3. WG Type: WR42

**MATERIAL**

- 1. Body: Brass

Revisions			
Rev	Description	Date	Approved:
A	Initial Release	2017.3.9	A. M



**NOTES:**

- 1. ALL SPECIFICATIONS ARE SUBJECT TO CHANGE WITHOUT NOTICE AT ANY TIME
- 2. CUSTOMER OUTLINE DRAWING FOR REFERENCE ONLY

Drawn:	W. Y 2017.3.9
Checked:	T. L 2017.3.9
Approved:	A. M 2017.3.9
Unless Otherwise Specified Dimensions are in Millimeters, Dimensions in [ ] are in Inches for Customer Reference Only. Unless Otherwise Specified Tolerance are: .XX ±0.13 [.005"] .X ±0.20 [.008"] X ±0.50 [.019"] .X° ±1° X° ±2°	

Title:	<b>WR42 Load</b>
Part No:	<b>DWL42T</b>

**DEEWAVE**  
www.deewave.com

View:

Size:	Scale:	Sheet:	Rev:
A3	2:1	1/1	A