

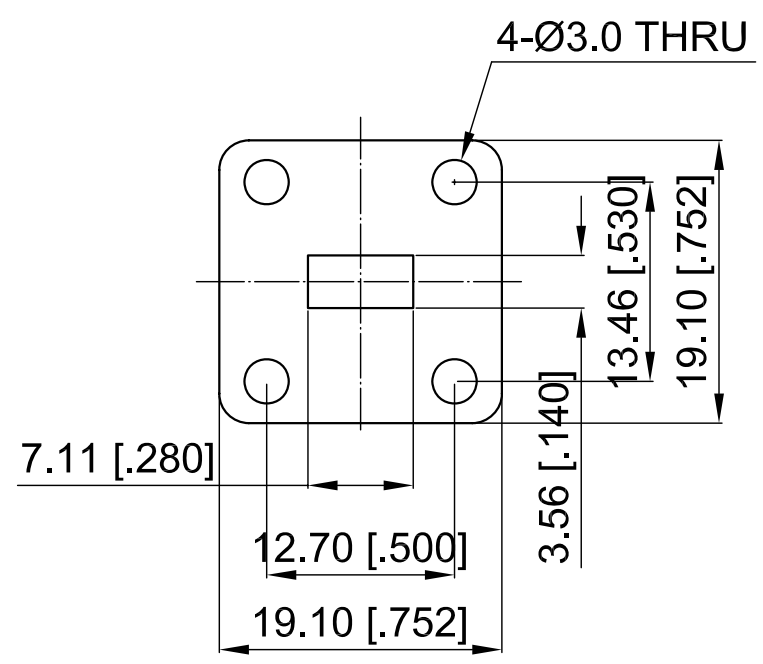
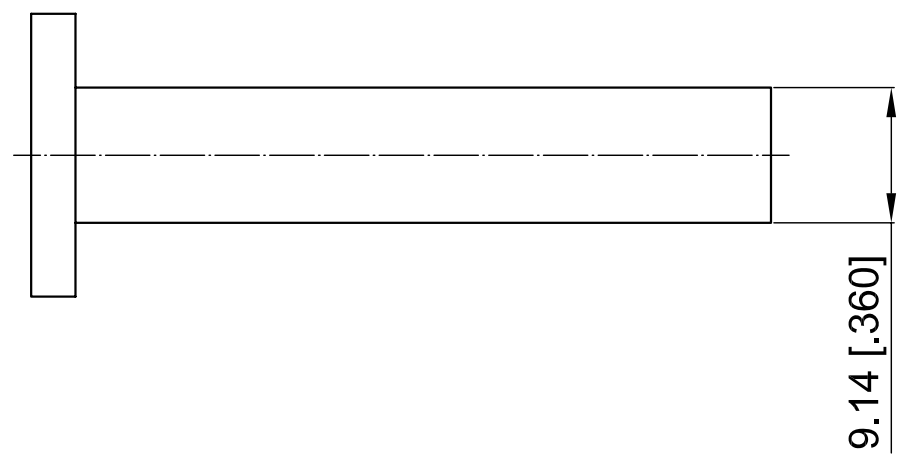
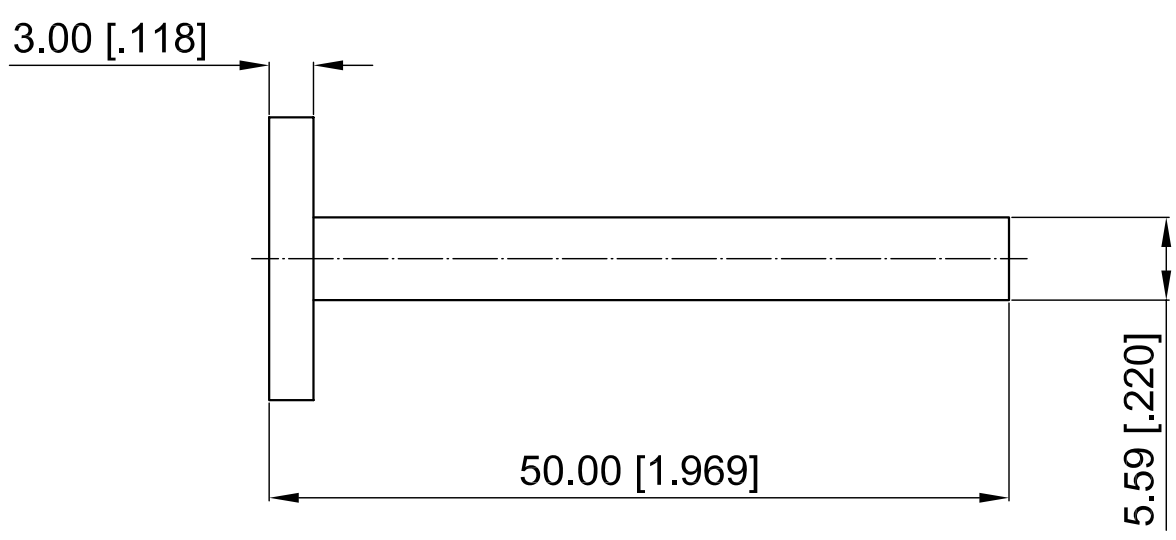
Revisions			
Rev	Description	Date	Approved:
A	Initial Release	2017.6.9	A. M

ELECTRICAL PERFORMANCE

- 1. Frequency Range: 26.5-40 GHz
- 2. VSWR: 1.03 max.
- 3. WG Type: WR28

MATERIAL

- 1. Body: Brass



NOTES:

- 1. ALL SPECIFICATIONS ARE SUBJECT TO CHANGE WITHOUT NOTICE AT ANY TIME
- 2. CUSTOMER OUTLINE DRAWING FOR REFERENCE ONLY

Drawn:	W. Y 2017.6.9
Checked:	T. L 2017.6.9
Approved:	A. M 2017.6.9
Unless Otherwise Specified Dimensions are in Millimeters, Dimensions in [] are in Inches for Customer Reference Only. Unless Otherwise Specified Tolerance are: .XX ±0.13 [0.005"] .X ±0.20 [0.008"] X ±0.50 [0.019"] .X° ±1° X° ±2°	

Title:	WR28 Load
Part No:	DWL28T

DEEWAVE
www.deewave.com

View:

Size: A3	Scale: 2:1	Sheet: 1/1	Rev: A
----------	------------	------------	--------