

6

5

4

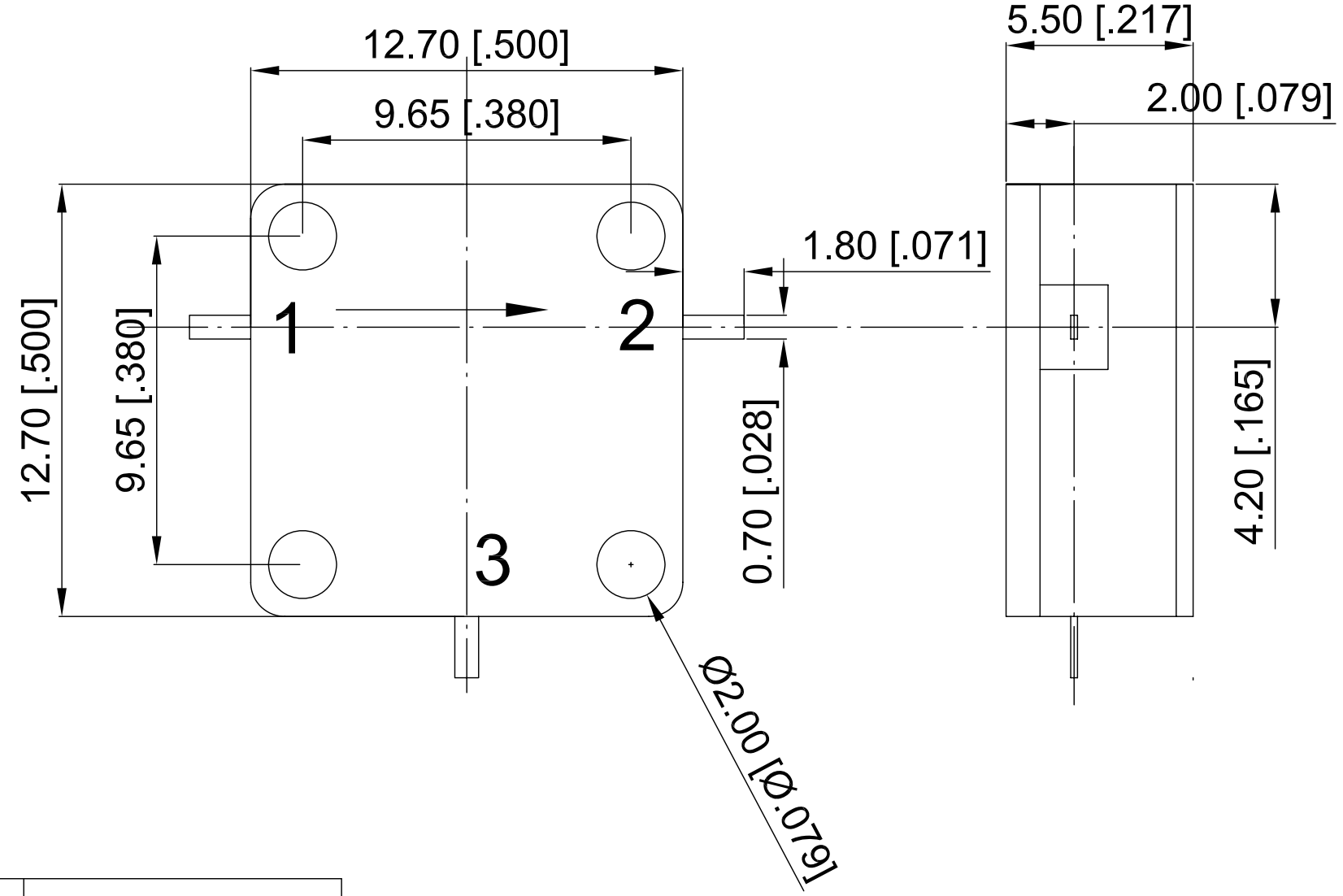
3

2

1

Revisions			
Rev	Description	Date	Approved:
A	Initial Release	2014.8.21	A. M

Product Model: Drop-in Circulator
 Frequency Range: 10.5-11.0GHz
 Impedance: 50 Ω
 Insertion Loss : 0.40 dB Max.
 Isolation : 20 dB Min.
 VSWR: 1.25 Max.
 Average Power: 125W



Part No.	Direction
DDC10501100-1	Clockwise
DDC10501100-2	Unclockwise

NOTES:
 1. ALL SPECIFICATIONS ARE SUBJECT TO CHANGE WITHOUT NOTICE AT ANY TIME
 2. CUSTOMER OUTLINE DRAWING FOR REFERENCE ONLY

Drawn:	W. Y 2014.8.21
Checked:	T. L 2014.8.21
Approved:	A. M 2014.8.21
Unless Otherwise Specified Dimensions are in Millimeters, Dimensions in [] are in Inches for Customer Reference Only. Unless Otherwise Specified Tolerance are: .XX ±0.13 [.005"] .X ±0.20 [.008"] X ±0.50 [.019"] .X° ±1° X° ±2°	

Title:	Drop-in Circulator Freq 10.5-11.0GHz
Part No:	DDC10501100-X



View:	
Size:	A3
Scale:	4:1
Sheet:	1/1
Rev:	A

6

5

4

3

2

1